

0109973en	005
08.2011	

Vibratory plate

DPS 1850H

Basic

Operator's Manual



Manufacturer

Wacker Neuson Produktion GmbH & Co. KG
Preußenstraße 41
80809 München
www.wackerneuson.com

Tel.: +49-(0)89-354 02-0
Fax: +49-(0)89-354 02-390

Translation of the original operator's manual in German



**WACKER
NEUSON**

1 Foreword

This operator's manual contains information and procedures for the safe operation and maintenance of your Wacker Neuson machine. In the interest of your own safety and to prevent accidents, you should carefully read through the safety information, familiarize yourself with it and observe it at all times.

This operator's manual is not a manual for extensive maintenance and repair work. Such work should be carried out by Wacker Neuson service or authorized specialists.

The safety of the operator was one of the most important aspects taken into consideration when this machine was designed. Nevertheless, improper use or incorrect maintenance can pose a risk. Please operate and maintain your Wacker Neuson machine in accordance with the instructions in this operator's manual. Your reward will be troublefree operation and a high degree of availability.

Defective machine parts must be replaced immediately!

Please contact your Wacker Neuson representative if you have any questions concerning operation or maintenance.

All rights reserved, especially reproduction and distribution rights.

Copyright 2011 Wacker Neuson Produktion GmbH & Co. KG

No part of this publication may be reproduced in any form or by any means, electronic or mechanical, including photocopying, without the expressed written permission of Wacker Neuson.

Any type of reproduction, distribution or storage on data media of any type and form not authorized by Wacker Neuson represents an infringement of copyright and will be prosecuted.

We expressly reserve the right to make technical modifications – even without special notice – which aim at further improving our machines or their safety standards.

Table Of Contents

1. Technical Data	20
2. Description	22
2.1 Max. admissible inclination	22
2.2 Description of function	23
3. Transport to work site/Recommendations on compaction	24
3.1 Transport to work site	24
3.2 Recommendations on compaction	25
4. Operating instruction	26
4.1 Diesel fuel	26
4.2 Dry-type air filter	26
4.3 Air cleaner – inspecting the service indicator	27
4.4 Starting the engine	27
4.5 Switching off the engine	28
4.6 Short-term operation interruption	28
4.7 End of compaction operation	28
5. Maintenance	29
5.1 Maintenance schedule	29
5.2 Engine oil	30
6. Malfunction	31
6.1 Engine does not start	31
6.2 No vibration, even though engine is running	31

2 Safety

2.1 Principle

State of the art

This machine has been constructed with state-of-the-art technology according to the recognized rules of safety. Nevertheless, when used improperly, dangers to the life and limb of the operator or to third persons or damage to the machine or other materials cannot be excluded.

Proper use

The machine must only be used for the following purposes:

- Compaction of soils.
- Compaction of asphalt.
- Shaking in of paving stones.

The machine may not be used for the following purposes:

- Compaction of intensely cohesive soils.
- Compaction of frozen soils.
- Compaction of hard, non-compactable soils.
- Compaction of soils that are not capable of bearing a load.

Its proper use also includes the observance of all instructions contained in this operator's manual as well as complying with the required service and maintenance instructions.

Any other use is regarded as improper. Any damage resulting from improper use will void the warranty and the liability on behalf of the manufacturer. The operator assumes full responsibility.

Structural modifications

Never attempt to modify the machine without the written permission of the manufacturer. To do so will endanger your safety and the safety of other people! In addition, this will void the warranty and the liability on behalf of the manufacturer.

Especially the following are cases of structural modifications:

- Opening the machine and the permanent removal of components from Wacker Neuson.
- Installing new components which are not from Wacker Neuson and not equivalent to the original parts in design and quality.
- Installation of accessories which are not from Wacker Neuson.

It is no problem to install spare parts from Wacker Neuson.

It is no problem to install accessories that are available in the Wacker Neuson product range of your machine. Please refer to the installation regulations in this operator's manual.

Requirements for operation

The ability to operate the machine safely requires:

- Proper transport, storage and setup.
- Careful operation.
- Careful service and maintenance.

Operation

Operate the machine only as intended and only when in proper working condition.

Operate the machine in a safety-conscious manner with all safety devices attached and enabled. Do not modify or disable any safety devices.

Before starting operation, check that all control and safety devices are functioning properly.

Never operate the machine in a potentially explosive environment.

Supervision

Never leave the machine running unattended!

Maintenance

Regular maintenance work is required in order for the machine to operate properly and reliably over time. Failure to perform adequate maintenance reduces the safety of the machine.

- Strictly observe the prescribed maintenance intervals.
- Do not use the machine if it requires maintenance or repairs.

Malfunctions

If you detect a malfunction, you must shut down and secure the machine immediately.

Eliminate the malfunctions that impair safety immediately!

Have damaged or defective components replaced immediately!

For further information, refer to chapter *Troubleshooting*.

Spare parts, accessories

Use only spare parts from Wacker Neuson or such that are equivalent to the original parts in design and quality.

Only use accessories from Wacker Neuson.

Non-compliance will exempt the manufacturer from all liability.

Exclusion of liability

Wacker Neuson will refuse to accept liability for injuries to persons or for damage to materials in the following cases:

- Structural modifications.
- Improper use.
- Failure to comply with this operator's manual.
- Improper handling.
- Using of spare parts which are not from Wacker Neuson and not equivalent to the original parts in design and quality.
- Using of accessories which are not from Wacker Neuson.

Operator's manual

Always keep the operator's manual near the machine or near the worksite for quick reference.

If you have misplaced the operator's manual or require an additional copy, contact your Wacker Neuson representative or download the operator's manual from the Internet (www.wackerneuson.com).

Always hand over this operator's manual to other operators or to the future owner of the machine.

Country-specific regulations

Observe the country-specific regulations, standards and guidelines in reference to accident prevention and environmental safety, for example those pertaining to hazardous materials and wearing protective gear.

Complement the operator's manual with additional instructions taking into account the operational, regulatory, national or generally applicable safety guidelines.

Operator's controls

Always keep the operator's controls of the machine dry, clean and free of oil or grease.

Operating elements such as ON/OFF switch, gas handles etc. may not be locked, manipulated or changed without authorization.

Cleaning

Always keep the machine clean and be sure to clean it each time you have finished using it.

Do not use gasoline or solvents. Danger of explosion!

Do not use high pressure washers. Permeating water can damage the machine. When electrical equipment is present, this can pose a serious injury risk from electric shocks.

Checking for signs of damage

Inspect the machine when it is switched off for any signs of damage at least once per work shift.

Do not operate the machine if there is visible damage or defects.

Have any damage or defects eliminated immediately.

2.2 Qualification of the operating personnel

Operator qualifications

Only trained personnel are permitted to start and operate the machine. The following rules also apply:

- You are at least 18 years of age.
- You are physically and mentally fit.
- You have received instruction on how to independently operate the machine.
- You have received instruction in the proper use of the machine.
- You are familiar with required safety devices.
- You are authorized to start machines and systems in accordance with the standards governing safety.
- Your company or the operator has assigned you to work independently with this machine.

Incorrect operation

Incorrect operation or misuse by untrained personnel can endanger the health and safety of the operator or third persons and also cause machine and material damage.

Operating company responsibilities

The operating company must make the operator's manual available to the operator and ensure that the operator has read and understood it.

Work recommendations

Please observe the recommendations below:

- Work only if you are in a good physical condition.
- Work attentively, particularly as you finish.
- Do not operate the machine when you are tired.
- Carry out all work calmly, circumspectly and carefully.
- Never operate the machine under the influence of alcohol, drugs or medication. This can impair your vision, reactions and your judgment.
- Work in a manner that does not endanger others.
- Ensure that no persons or animals are within the danger zone.

2.3 Protective gear

Work clothing

Clothing should be appropriate, i.e. should be close-fitting but not restrict your movement.

When on construction sites, do not wear long hair loosely, loose clothing or jewelry including rings. These objects can easily get caught or be drawn in by moving machine parts.

Only wear clothing made of material that is not easily flammable.

Personal protective gear

Wear personal protective gear to avoid injuries or health hazards:

- Non-skid, hard-toed shoes.
- Work gloves made of durable material.
- Overalls made of durable material.
- Hard hat.
- Ear protection.

Ear protection

This machine generates noise that exceeds the country-specific permissible noise levels (individual rating level). It may therefore be necessary to wear ear protection. You can find the exact value in the chapter *Technical Data*.

When wearing ear protection while working, you must pay attention and exercise caution because your hearing is limited, e.g. in case someone screams or a signal tone sounds.

Wacker Neuson recommends that you always wear ear protection.

2.4 Transport

Switching off the machine

Before you transport the machine, it must be switched off, and the engine must be given sufficient time to cool down.

Observing hazardous materials regulations

Observe the national safety guidelines and the hazardous materials regulations that apply to the respective means of transportation.

Lifting

When lifting the machine, observe the following instructions:

- Designate a skilled person to guide you for the lifting procedure.
- You must be able to see or hear this person.
- Use only suitable and certified hoisting gear, lifting tackle and load-bearing equipment with sufficient lifting capacities.
- Only use the attachment points described in the operator's manual.
- Attach the machine securely to the hoisting gear.
- Ensure that no one is nearby or under the machine.
- Do not climb onto the machine.

Loading the machine

Loading ramps must be able to bear the load and be in a stable position.

Make sure that no one can be endangered if the machine slips away or tips over or if machine parts suddenly move upward or downward.

Put the operating controls and moving parts in their transport position.

Secure the machine with load-securing straps so that it cannot tip over, fall down or slide away. Only use the attachment points described in the operator's manual.

Transport vehicle

Use only suitable transport vehicles with sufficient load-carrying capacity and suitable tie-down lugs.

Transporting the machine

Secure the machine on the transport device against tilting, falling or slipping.

Only use the lashing points listed in the operating instructions.

Also observe the country-specific regulations, standards and guidelines.

Restarting

Machines, machine parts, accessories or tools that were detached for transport purposes must be re-mounted and fastened before restarting.

Only operate in accordance with the operating instructions.

2.5 Operating safety

Explosible environment

Never operate the machine in a potentially explosive environment.

Work environment

Familiarize yourself with your work environment before you start work. This includes e.g. the following items:

- Obstacles in the work and traffic area.
- Load-bearing capacity of the ground.
- The measures needed to cordon off the construction site from public traffic in particular.
- The measures needed to secure walls and ceilings.
- Options available in the event of an accident.

Safety in the work area

When working with the machine especially pay attention to the following points:

- Electric lines or pipes in work area.
- Gas lines or water lines in the work area.

Starting the machine

Observe the safety information and warning notices located on the machine and in the operator's manual.

Never attempt to start a machine that requires maintenance or repairs.

Start the machine as directed in the operator's manual.

Vertical stability

Always ensure that the machine is vertically stable and cannot tip over, roll or slide away.

Proper operator position

Do not leave the proper operator position while operating the machine.

The proper operator position is behind the center pole of the machine.

Leaving the danger area

Injury may be caused by moving machines or flying materials.

Ensure that other persons observe a minimum safety distance of 2 m from the machine.

Caution with movable parts

Keep your hands, feet and loose clothing away from moving or rotating machine parts. Parts of your body being pulled in or crushed can cause serious injuries.

Switching off the machine

Switch off the engine in the following situations:

- Before breaks.
- If you are not using the machine.

Store the machine in such a way that it cannot tilt, fall or slip.

Storage location

After operation, allow the machine to cool and then store it in a sealed-off, clean and dry location protected against frost and inaccessible to children.

Not using starter sprays

Highly flammable starter sprays pose a fire hazard.

Do not use any starter sprays.

Starter sprays are highly flammable and can cause backfiring and engine damage.

Vibrations

When manually operated machines are intensively used, long-term damage caused by vibrations cannot be precluded.

Observe the relevant legal instructions and guidelines to minimize vibration stress.

Details on vibration stress associated with the machine can be found in the chapter *Technical Data*.

2.6 Safety during the operation of vibratory plates**Integrated driving mechanism**

Machines with integrated driving mechanism must not be set down or stored on the transport device. The driving mechanism is only intended for transport.

Belt guard

Never operate the machine without a belt guard!

Exposed belts and belt pulleys are dangerous and can cause serious injuries if they pull in any part of your body or if parts are ejected.

Danger of falling over

Operate the machine so that it cannot tip over or fall down from bordered areas, edges and steps.

Load-carrying capacity of the ground

Keep in mind that the load-carrying capacity of the earth to be compressed or bed can be greatly reduced by the effects of vibration, for example near slopes.

Avoiding crushing

When operating the machine, pay particular attention to avoid being squeezed between the machine and an obstacle. Always look in the direction of travel!

Compacting on slopes

The following points must be observed if you plan to compact inclined surfaces (slopes, escarpments):

- Always stand above the machine on a slope.
- Start at the bottom of a slope (slopes that can be easily managed in an upward direction can be safely traveled in a downward direction also).
- Never stand in a position where the machine could possibly fall. A slipping or tipping machine can cause serious injuries.

Not exceeding the maximum tilt position

- Do not exceed the maximum tilt position (see chapter *Technical Data*).
- Only operate the machine at maximum tilt for short periods of time.

If you exceed the maximum tilt, the engine lubrication system will fail and thus inevitably damage important engine parts.

Check the effects of vibration

Compacting work in the vicinity of buildings can lead to structural damage. For this reason you must always check the possible effects of vibrations on surrounding buildings in the run-up to work.

You must take the following points into special consideration when evaluating the effects of vibration:

- Vibration behavior, sensitivity and resonance frequency of surrounding buildings.
- Distance of the buildings from the vibrationsite (= worksite).
- Condition of the soil.

You may need to carry out measurements to determine the vibration speed.

You must also comply with the relevant guidelines and regulations, particularly DIN 4150-3.

The foundation must also have sufficient load-bearing capacity to withstand the compaction energy. In case of doubt involve a soil mechanics specialist in the evaluation.

Wacker Neuson is not liable for any structural damage.

2.7 Safety during the operation of combustion engines

Checking for signs of damage

Check the engine while switched off for leaks and cracks in the fuel line, tank and fuel cap at least once per work shift.

Do not operate the machine if there is visible damage or defects.

Have any damage or defects eliminated immediately.

Dangers during operation

Combustion engines can be dangerous, particularly during operation and when refueling.

Read and follow all safety instructions. Otherwise there is a risk of personal injury and/or damage to property!

Do not start the engine near spilt fuel or if you smell fuel – this may cause an explosion!

- Remove the machine from such areas.
- Remove the spilt fuel immediately!

Not changing the engine speed

Do not change the preset engine speed, as this may cause engine damage.

Preventing fires

Open flames and smoking are strictly prohibited in the immediate vicinity of the machine.

Make sure that waste, such as paper, dry leaves or grass do not accumulate around the exhaust muffler. The waste materials may ignite.

Safety precautions when refueling

Please observe the following safety-relevant instructions when refueling:

- Do not refuel near open flames.
- Do not smoke.
- Turn off the engine before refueling and allow it to cool down.
- Refuel in a well-ventilated environment.
- Wear fuel-proof protective gloves and, if there is the possibility of spraying, protective goggles and clothing.
- Do not inhale fuel vapors.
- Avoid skin and eye contact with fuel.
- For refueling, use clean tools such as a hopper.
- Do not spill fuel, especially onto hot parts.
- Remove any spilt fuel immediately.
- Use the correct fuel grade.
- Do not mix fuel with other liquids.
- Fill the tank only up to the maximum marking. If there is no Maximum marking, do not fill up the tank completely.
- Lock the fuel cap securely after refueling.

Operation in closed rooms

In closed or partially closed rooms such as tunnels, drifts or deep trenches, ensure sufficient ventilation and extraction by, for example, providing a powerful exhaust air fan.

Danger of poisoning! Do not inhale exhaust fumes. They contain toxic carbon monoxide that can lead to unconsciousness or death.

Caution with hot parts

Do not touch any hot parts such as the engine block or exhaust muffler during operation or directly afterwards. These parts can become very hot and cause severe burns.

Shutting off the fuel tap

When the machine stops, shut off the fuel tap.

Cleaning the engine

Clean the engine when it is cool to remove any dirt.

Do not use gasoline or solvents. Danger of explosion!

2.8 Safety during the operation of hydraulic machines

Hydraulic oil

Hydraulic oil is harmful to health.

Wear safety glasses and safety gloves when handling hydraulic oil.

Avoid direct skin contact with hydraulic oil. Remove hydraulic oil from the skin immediately with soap and water.

Make sure that no hydraulic oil comes gets in the eyes or on the body. See a physician immediately if hydraulic oil gets into the eyes or is swallowed.

Do not eat and drink while handling hydraulic oil.

Make sure to have extreme cleanliness. Contamination of the hydraulic oil with dirt or water can cause premature wear or failure of the machine.

Dispose of left over and spilled hydraulic oil according to the applicable regulations for environmental protection.

2.9 Maintenance

Maintenance work

Service and maintenance work must only be carried out to the extent described in these operating instructions. All other procedures must be performed by your Wacker Neuson representative.

For further information, refer to chapter *Maintenance*.

Switching off the engine

Before carrying out care or maintenance work, switch off the engine and allow it to cool down.

For gasoline powered engines, you must pull off the spark plug cap.

Assembling safety devices

If it was necessary to dismantle safety devices, they must be reassembled and checked immediately after completing maintenance work.

Always tighten loosened screw connections, complying with prescribed starting torque.

Handling operating fluids safely

Observe the following points when handling operating fluids, e.g. fuels, oils, greases, coolants etc.:

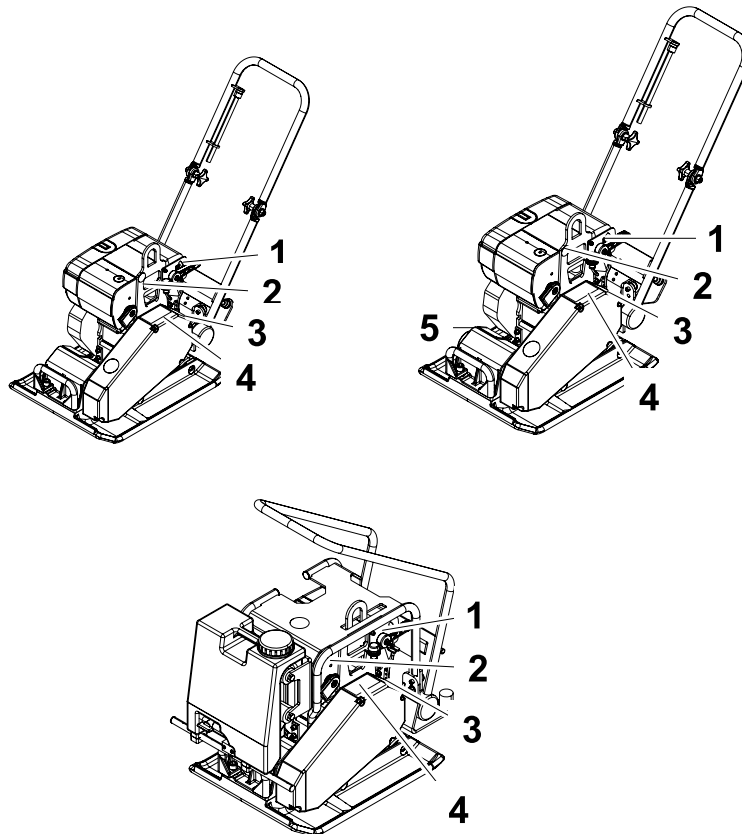
- Always wear personal safety clothing.
- Avoid skin and eye contact with operating fluids.
- Do not inhale or swallow operating fluids.
- In particular, avoid contact with hot operating fluids. Burn and scalding hazard.
- Dispose of replaced or spilled operating fluids according to the applicable regulations for environmental protection.
- If operating fluids escape from the machine, cease operation of the machine and have it repaired immediately by your Wacker Neuson representative.

2.10 Safety and information labels




Your machine has adhesive labels containing the most important instructions and safety information.

- Make sure that all the labels are kept legible.
- Replace any missing or illegible labels.

The item numbers for the labels are in the parts book.



Item	Label	Description
1		Start-Stop.
2		<p>If the machine falls, it can cause severe crushing injuries.</p> <ul style="list-style-type: none"> ▶ Only lift the machine with certified hoist and lifting tackle (safety load hook). ▶ Do not lift the machine with the excavator shovel by the central suspension. ▶ Do not lift the machine with a forklift by the central suspension.

Item	Label	Description
3		Wear personal protective gear to avoid injuries or health hazards: <ul style="list-style-type: none">■ Ear protection. Read the operator's manual before start-up.
4		Guaranteed sound power level.
5		Eccentric weights adjustment/oil

Technical Data

1. Technical Data

	DPS 1850H - Basic	DPS 1850H - Vario	DPS 1850H - Asphalt
Item no.	0610032	0610034	0610033
Length x width x height mm:	600 x 500 x 845		600 x 500 x 1038
Operating weight kg:	110	108	138
Forward speed m/min:	to 17,8	to 14,7	to 18,1
Surface compaction performance m ² /h:	to 534	to 441	to 543
Power transmission	From the centrifugal clutch via the V-belt to the exciter, which in turn transmits the centrifugal forces directly to the lower mass		
Exciter			
Vibrations min ⁻¹ (Hz):	5300 (88,3)	5900 (98,3)	5300 (88,3)
Centrifugal force kN:	16,9	10,9/15,9	16,9
Oil		Fuchs Titan Unic 10W40 MC (SAE 10W40)	
Drive motor	Air-cooled single-cylinder 4-stroke diesel engine with recoil starter		
Piston displacement cm ³ :	232		
Engine speed min ⁻¹ :	3600		
Nominal output (*) kW:	3,4		
Fuel	Diesel		
Fuel consumption l/h:	1		
Tank capacity l:	3,0		
Oil	Fuchs Titan Unic 10W40 MC (SAE 10W40)		
Special lubricating grase L _{PA} :	92 dB(A)	93 dB(A)	92 dB(A)

Technical Data

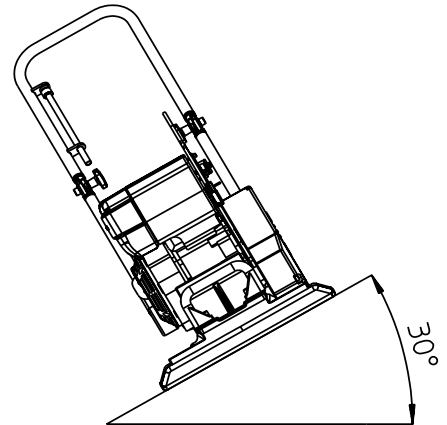
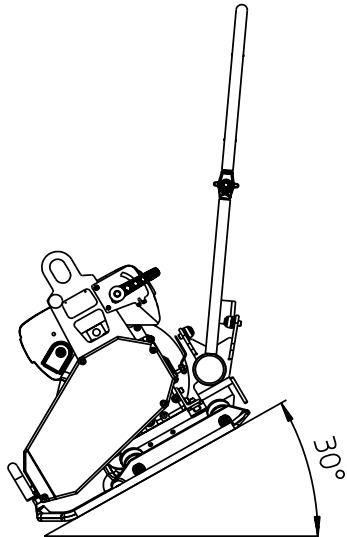
	DPS 1850H - Basic	DPS 1850H - Vario	DPS 1850H - Asphalt
The weighted effective acceleration value, determined according to EN ISO 5349 m/s ² :	6,1	3,0	6,6
Uncertainty K m/s ² :	1.0		

(*) In accordance with the installed useful outlet power according to Directive 2000/14/EG.

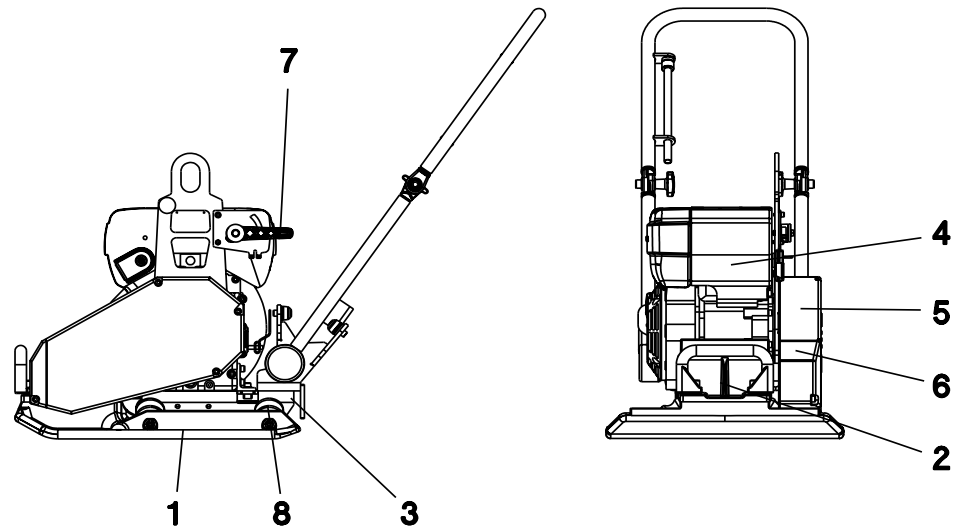
Description

2. Description

2.1 Max. admissible inclination



2.2 Description of function



- 2.2.1 The exciter (2), which is integrated to the lower mass (1), produces the vibrations required and centrifugal force for the compaction process. This exciter is of the single directional type and has been designed to create circular vibrations.
- 2.2.2 The engine (4) drives the exciter (2) and is fixed to the motor console (3). The engine torque is transmitted via the centrifugal clutch (5) and the exciter V-belt (6).
- 2.2.3 The centrifugal clutch (5) interrupts the power flow to the exciter (2) when the engine is turning at low rpm's, thereby allowing a flawless idling of the drive engine (4). The drive engine's (4) rpm can be changed from full to idle and stop by way of the throttle lever (7).
- 2.2.4 The engine console (3) and the lower mass (1) have be connected to each other by means of 4 vibration absorbing shock-mounts (8). The damping effect reduces the transmission of the very high frequencies to the engine console (3). With that, and despite the high compaction efficiency, the functionality of the drive engine (4) is maintained.
- 2.2.5 The drive engine (4) works according to the diesel principle, is equipped with a recoil starter, draws in combustion air through a dry type air cleaner and is air-cooled.

Transport to work site/Recommendations on compaction

3. Transport to work site/Recommendations on compaction

3.1 Transport to work site

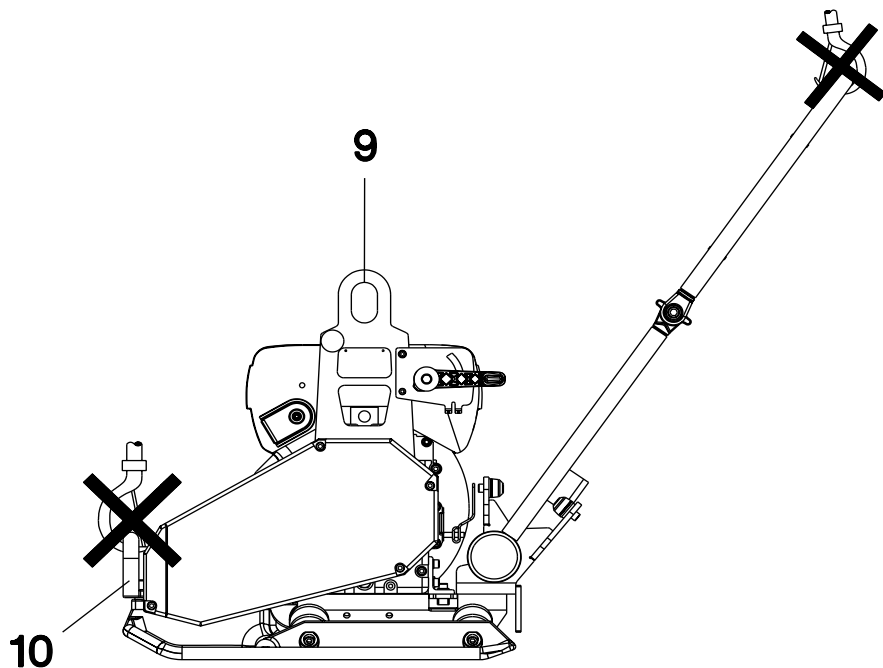
Conditions:

- * To transport the vibration plate, only use suitable lifting equipment with a minimum load-bearing capacity of 150 kg.
- * During transport, always switch the engine off!
- * Only attach suitable tackle at the central lifting point (9) provided.
- * When transporting the machine make sure it is tied down. As fixing points front handles (10) may be used. Do ensure that the machine cannot tilt over by threading the rope through the upright handle.

Do not suspend from the guide handle!



Note: Also observe the regulations in the chapter “safety instructions“.



Transport to work site/Recommendations on compaction

3.2 Recommendations on compaction

3.2.1 Ground conditions

The max. compaction depth depends on several factors relating to the ground condition, such as moisture, grain distribution etc, it is therefore not possible to specify exact values.

Recommendation: In each case determine the max. compaction depth with compaction tests and soil samples.

3.2.2 Compaction on slopes

The following points are to be observed when compacting on sloped surfaces (slopes, embankments):

- * Only approach gradients from the bottom (a gradient which can be easily overcome upwards, can also be compacted downwards without any risk).
- * The operator must never stand in the direction of descent (see chapter “safety instructions“).
- * The max. gradient of 30° must not be exceeded.



If this gradient were exceeded, this would result in a failure of the engine lubrication system and thus inevitably lead to a breakdown of important engine components.

Operating instruction

4. Operating instruction

4.1 Diesel fuel

Only use pure diesel fuel. Close fuel tank immediately. It is important to maintain absolute cleanliness to avoid otherwise inevitable trouble with the fuel injection system, and to avert a premature clogging up of the fuel filter. Do not open the fuel line nor the fuel pump or any other point of the fuel system to avoid danger of dirt contamination, not even for bleeding of air. The fuel pump will bleed automatically. This applies even should the fuel tank have run dry by mistake. In such a case simply refill fuel tank.

4.2 Dry-type air filter

A loss of engine power with a simultaneous belching of smoke indicates a plugged-up air filter. Remove filter cartridge and clean by light tapping to dislodge dust from the paper element.



Clean filter housing! Use a clean rag, do not clean with compressed air. While cleaning avoid by all means introducing dirt into the engine intake port.

4.3 Air cleaner – inspecting the service indicator

Set the engine to full rpms for a short period of time. If the bellows is drawn together during this time and the green field „1“ is covered, then the air cleaner system is due for maintenance. Check the rubber bellows repeatedly per day when working in dusty environments.



4.4 Starting the engine

- * Only start with the engine starting procedure once a sufficiently stable position is assured.
- * Move throttle lever to start position.
- * Slowly pull out starter rope until the engine's compression resistance can be felt.
- * At this point let starter rope slowly return into starter housing.
- * Now start the engine. Pull out the rope (evenly, not by jerks as is usual with gasoline engines) and turn the engine with ever increasing speed. Use complete length of starter rope.

Operating instruction

4.5 Switching off the engine

Pull throttle lever back to STOP position.

4.6 Short-term operation interruption

Set throttle control lever to idling position.

4.7 End of compaction operation

Stop engine.

5. Maintenance

5.1 Maintenance schedule

Component	Maintenance work	Maintenance interval
Engine oil	Check oil level. Check combustion and cooling air area for dirt.	daily
Air filter	Inspect the air cleaner service indicator while the engine is running. Clean or replace the air cleaner insert if necessary.	
Exciter	Check attachment screws for tight fit.	monthly
Engine oil	First oil change; check valve clearance set to 0,10 mm when engine is cold.	after 25 hours
Drive engine	Check water separator.	weekly
Engine oil	Replace.	after 250 hours
Valve clearance	Check, set to 0,10 mm with cold engine. Inspect screw connections.	
Drive engine	Tighten all accessible screw connections. Fuel filter change. Maintenance of dry air filter.	after 500 hours
Oil filter	Clean.	after 1000 hours

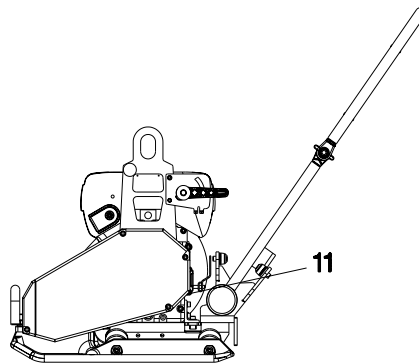
Maintenance

5.2 Engine oil

5.2.1 Check oil level:

- * The engine must be horizontally place when filling in oil or checking the oil level.
- * Check oil level with dip stick (11).
- * If oil level is to low, top up with oil Fuchs Titan Unic 10W40 MC through oil feed opening (11).

Engine oil capacity: 0,9 l.



5.2.2 Oil change:

1. Let engine warm up.
2. Screw oil drainage hose onto oil change valve. Collect oil in an appropriate container and dispose of.
3. Unscrew the oil drainage hose and return to provided hose holder.
4. Fill 0.9 l oil through oil fill opening (11) einfüllen.
5. Close oil change valve with screw-on cover.



Take notice: Please pay attention to the corresponding environmental laws when disposing of used engine oil. We recommend you carry the oil in a container to a central collecting point for used oils. Do not pour used engine oil into the garbage nor into the sewer system, waste pipes or even on the ground.

6. Malfunction

6.1 Engine does not start

Cause	Remedy
Throttle lever in stop or idle position.	Place throttle lever in start position.
No fuel at the injection pump.	Add fuel. Check complete fuel system.
	Check feeder line to engine and fuel filter.
Wrong valve tappet clearance.	Check valve clearance, set if necessary.
Worn out valves.	Call in Wacker Neuson Service.
Cylinder and/or piston ring wear.	
Injection nozzle not operating.	

6.2 No vibration, even though engine is running

Cause	Remedy
Worn-out V-belt	Replace V-belt
Worn-out clutch lining	Replace clutch linings



EC Declaration of Conformity

Manufacturer

Wacker Neuson Produktion GmbH & Co. KG, Preußenstraße 41, 80809 München

Product

Product	DPS 1850Hb	DPS 1850Ha	DPS 1850Hv
Product category	Vibrating plate		
Product function	Compacting soils		
Item number	0610032	0610034	0610033
Net installed power	3,4 kW	3,4 kW	3,4 kW
Measured sound power level	104 dB(A)	104 dB(A)	104 dB(A)
Guaranteed sound power level	108 dB(A)	108 dB(A)	108 dB(A)

Conformity assessment procedure

According to 2000/14/EC, Appendix VIII, 2005/88/EC.

Notified body

VDE Prüf- und Zertifizierungsinstitut GmbH, Merianstraße 28, 63069 Offenbach/Main

Guidelines and standards

We hereby declare that this product meets and complies with the relevant regulations and requirements of the following guidelines and standards:

2006/42/EG, 2000/14/EG, 2005/88/EG

Authorized person for technical documents

Axel Häret,
Wacker Neuson Produktion GmbH & Co. KG, Preußenstraße 41, 80809 München

München, 01.08.2011

Dr. Michael Fischer
Director of Technology and Innovation

