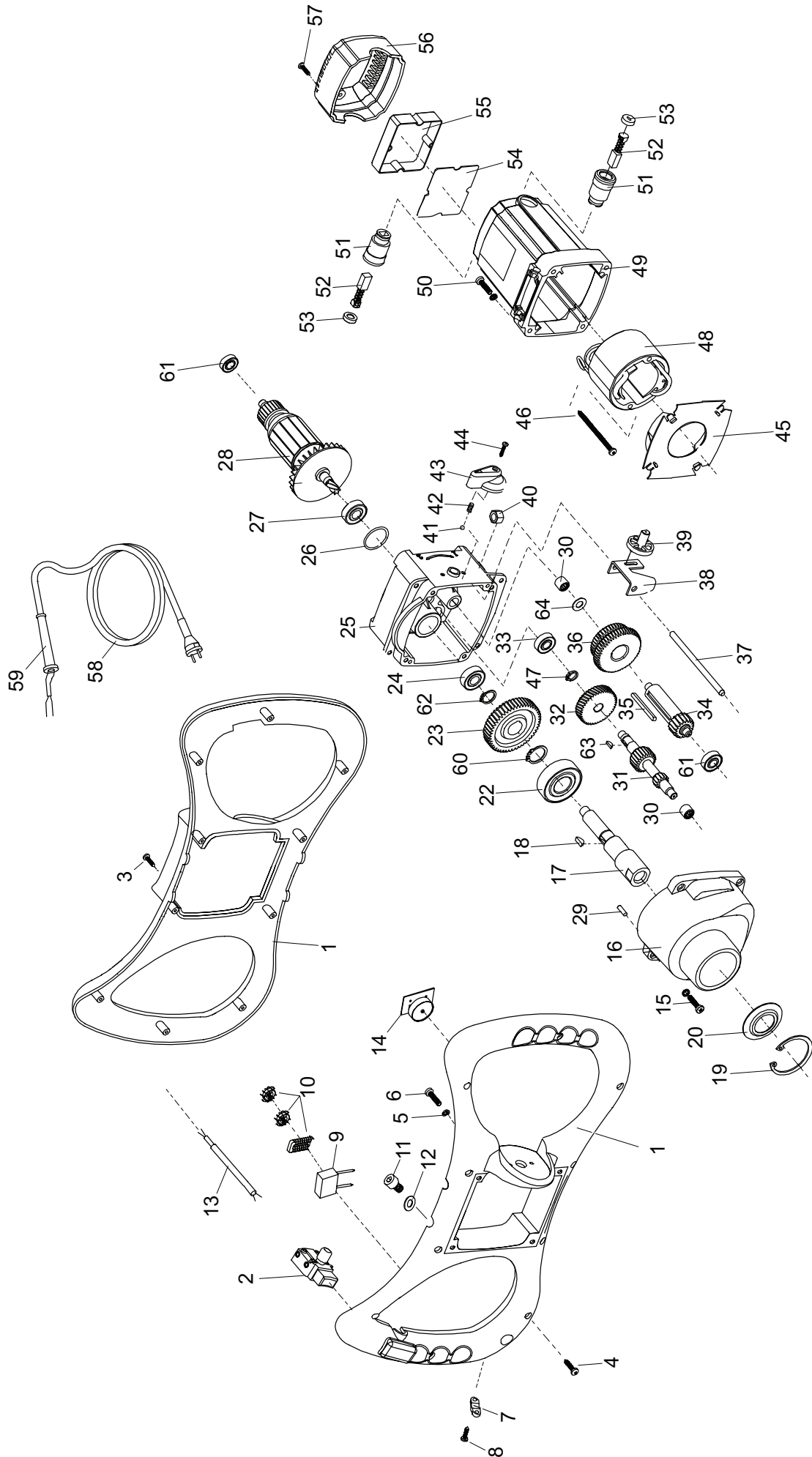


Promix 1200E & 1600E



Promix 1200E & 1600E

ITEM ⁽¹⁾ NO.	PART ⁽²⁾ NO.	DESCRIPTION ⁽³⁾	QTY ⁽⁴⁾	ITEM ⁽¹⁾ NO.	PART ⁽²⁾ NO.	DESCRIPTION ⁽³⁾	QTY ⁽⁴⁾
1	949/99501	Handle (→ June '08)	1	37	949/99531	Pivot	1
1	949/99592	Handle (→ June '08)	1	38	949/99532	Selector Fork	1
2	949/99502	Switch (→ June '08)	1	39	949/99533	Pivot	1
2	949/99593	Switch (→ June '08)	1	40	8/8001	Nut M8	2
3	7/3009	Screw ST3.5X16	10	41	949/99534	Bail/4	1
4	7/4006	Screw ST4X20	10	42	949/99535	Spring	1
5	4/5003	Spring washer	10	43	949/99536	Lever	1
6	7/5011	Screw M5X10	1	44	7/3010	Screw ST3X16	1
7	949/99505	Clamp	2	45	949/99602	Airguide Shim (1200E)	1
8	7/3009	Screw ST3.5X16	1	45	949/99537	Airguide Shim (1600E)	1
9	949/99506	Capacitor	1	46	949/99603	Screw ST4X70 (1600E)	2
10	949/99507	Inductance	4	46	7/5022	Screw ST5X65 (1600E)	2
11	10-330-0816	Screw M8X16	4	47	949/99604	Safety Ring Ø10	1
12	4/8006	Flat washer	1	48	949/99579	Stator (1200E - 110v)	1
13	949/99508	Electrical wire	1	48	949/99567	Stator (1200E - 230v)	1
14	949/99509	Circuitry Board / Speed Regulator	1	48	949/99578	Stator (1600E - 110v)	1
15	7/5022	Screw M5X16	4	48	949/99538	Stator (1600E - 230v)	1
16	949/99510	Bearing cover	1	49	949/99568	Motor Box (1200E)	1
17	949/99511	Spindle	1	49	949/99539	Motor Box (1600E)	1
18	949/99512	Hemicycle key 4 x 5 x 12	1	50	7/5009	Screw M5X25	4
19	949/99513	Safety ring	1	51	949/99569	Brush Holder (1200E)	1
20	949/99514	Dust cover	1	51	949/99540	Brush Holder (1600E)	1
22	949/99516	Bearing 6204DDU	1	52	949/99589	Carbon Brush (1200E - 110v)	1
23	949/99517	Spindle Gear	1	52	949/99570	Carbon Brush (1200E - 230v)	1
24	949/99518	Bearing 6000ZZ	2	52	949/99588	Carbon Brush (1600E - 110v)	1
25	949/99519	Gearbox	1	52	949/99541	Carbon Brush (1600E - 230v)	1
26	949/99600	Seal Ring (1200E)	1	53	949/99571	Brush Cap (1200E)	1
26	949/99520	Seal Ring (1600E)	1	53	949/99542	Brush Cap (1600E)	1
27	949/99601	Bearing (1200E)	1	54	949/99590	Controller (1200E - 110v)	1
27	949/99521	Bearing (1600E)	1	54	949/99572	Controller (1200E - 230v)	1
28	949/99577	Armature Ass'y (1200E - 110v)	1	54	949/99591	Controller (1600E - 110v)	1
28	949/99557	Armature Ass'y (1200E - 230v)	1	54	949/99543	Controller (1600E - 230v)	1
28	949/99576	Armature Ass'y (1600E - 110v)	1	55	949/99544	Protective Guard	1
28	949/99522	Armature Ass'y (1600E - 230v)	1	56	949/99574	Rear Cover (1200E)	1
29	949/99523	Pin	1	56	949/99545	Rear cover (1600E)	1
30	949/99524	Needle bearing	2	57	7/3009	Screw ST3.5X16	2
31	949/99525	Countershaft	1	58	949/99575	Cord (UK - 110v)	1
32	949/99526	Motor Gear (1200E)	1	58	949/99546	Cord (UK - 230v)	1
32	949/99597	Motor Gear (1600E)	1	58	949/99581	Cord (EU - 2300v)	1
33	949/99562	Bearing 698ZZ	1	59	949/99547	Sleeve	1
34	949/99528	Pinion	1	60	949/99582	Safety Ring	1
35	949/99529	Parallel key	1	61	949/99527	Bearing 608ZZ	2
36	949/99530	Double Gear	1	62	949/99583	Safety Ring	1
				63	949/99558	Hemicycle key 2.5 x 3.2 x 10	1
				64	949/99605	Spacer 0.8	1

(1) Item Number / numéro sur le schéma / número de la ilustración / número da ilustração / afbeeldingsnummer / tegningsnummeret / Teil-Nummer / numero dell'illustrazione

(2) Part Number / Numéro de référence de la pièce / número de pieza / número da parte / stuknummer / Styknummer / Nummer auf der Abbildung / numero di parte

(3) Description / Désignation / Descripción / Descrição / Omschrijving / Beskrivelse / Bezeichnung / Descrizione

(4) Quantity / Quantité / Cantidad / Quantidade / Hoeveelheid / Mengen / Mængde / Quantità



BELLE
LIGHT
CONSTRUCTION
EQUIPMENT

ALTRAD BELLE
Sheen, Nr. Buxton, Derbyshire, SK17 0EU, GB
Tel. +44 (0)1298 84606 - Fax +44 (0)1298 84722 - Email: sales@altrad-belle.com
www.Altrad-Belle.com