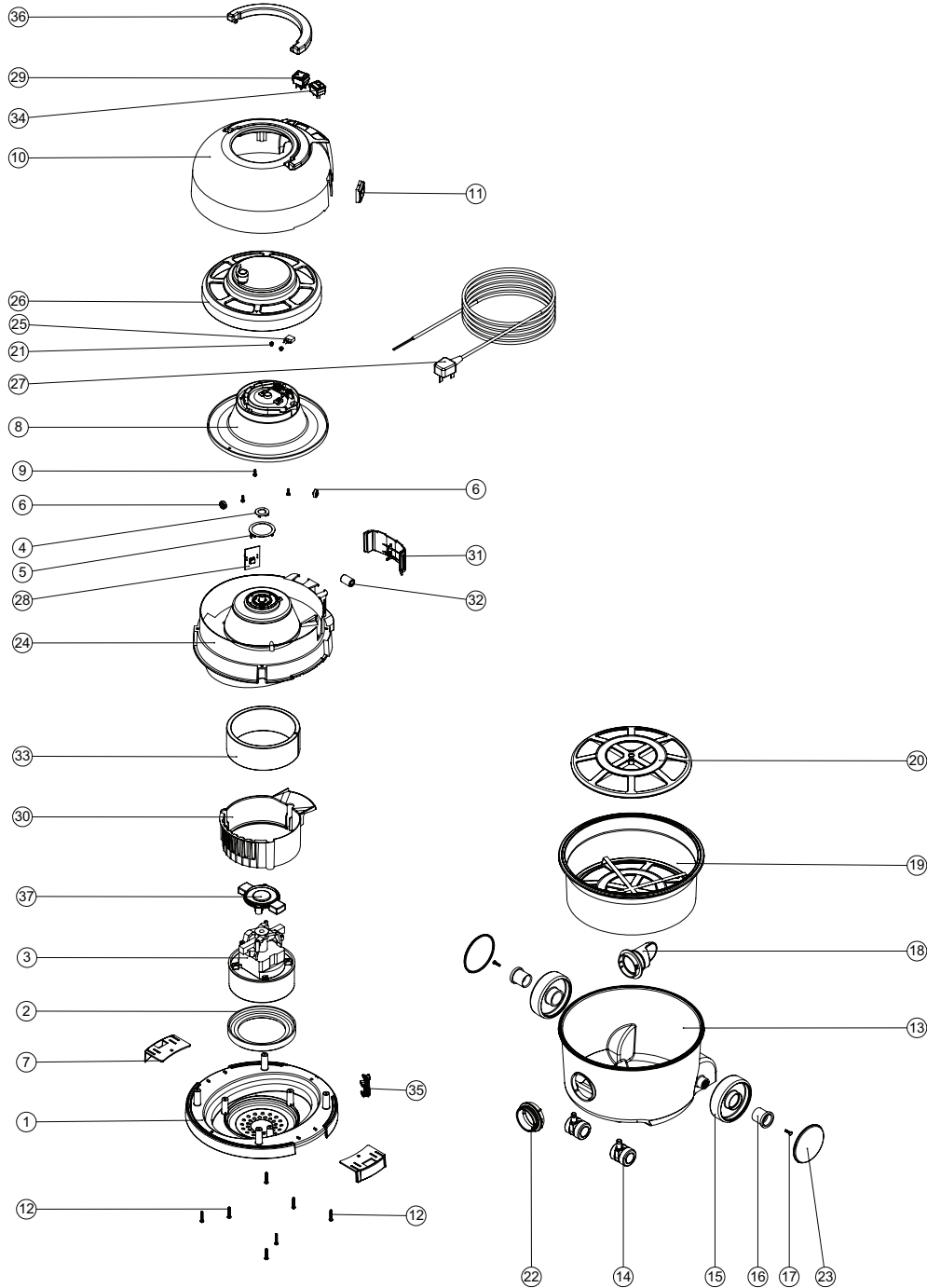


Numatic International Spare Parts

Model No: HVR-200A / HET-200A (AUTOSAVE)

234584
DRAWING: EXP-1012 ISS:A02
28/01/2009



Numatic International Spare Parts

Model No: HVR-200A / HET-200A (AUTOSAVE)

POS:	ITEM NO:	DESCRIPTION:	COMMENTS:
1	229618	BOTTOM MOTOR HOUSING (TWIN SHOT)	
2	227882	BOTTOM MOTOR GASKET	
3	205403	240V 2 STAGE THRO FLOW TAPER FAN MOTOR (DL21104T) TCO	
4	227141	INNER CONTACT RING	
5	227142	OUTER CONTACT RING	
6	227436	ROLLER WHEEL	
7	229622	TOGGLE (TWIN SHOT)	
8	227447	CABLE REEL MOULDING ASSEMBLY	
9	219101	No8 X 1/2 INCH LONG POZI PAN PLASTIITE SCREW	
10	229876	COVER + HANDLE ASSEMBLY (PRINTED WHITE HENRY LOGO + GREEN AUTOSAVE FLOWER LOGO)	INCLUDES ITEM 36 (227120)
	229877	COVER + HANDLE ASSEMBLY (PRINTED PINK HETTY LOGO + GREEN AUTOSAVE FLOWER LOGO)	INCLUDES ITEM 36 (227120)
11	227108	BLACK CABLE ENTRY	
12	219104	No8 X 1 INCH LONG POZI PAN PLASTITE SCREW	
13	227442	RED CONTAINER + FACE	
14	204000	40MM PU-TYRED BLACK TWIN WHEEL CASTOR	
15	227640	2 SHOT WHEEL ASSEMBLY	
16	227868	WHEEL HUB FOR 2 SHOT WHEEL	
17	219105	No8 X 5/8 INCH LONG POZI PAN PLASTITE SCREW	
18	227363	BAG CONNECTOR	
19	207109	12 INCH FILTER (DOUBLE BOTTOM) 160GRM SMS	
20	209200	12 INCH FILTER GRID	
21	219090	M4 X 8MM LONG POZI PAN SEMS SCREW	
22	227396	RED THREADED NECK	
23	227687	RED TRIM	
24	229620	TOP MOTOR HOUSING	
25	230096	SUPPRESSOR CAPACITOR ASSEMBLY WITH DISCHARGE RESISTOR	
26	333113	CABLE REEL COVER ASSEMBLY (C/W WINDER KNOB)	
27	236115	MAINS CABLE (10 METRE LONG X 0.75MM X 2 CORE (H05 V2V2-F) UK PLUG)	
28	206606	NUMATIC 2 SPEED CONTROL PCB (240V) GREEN BOARD 180MB	
29	220582	GREEN ROCKER SWITCH	
30	229621	AIR GUIDE	
31	229623	SWITCH COVER	
32	230097	AXIAL FERRITE BEAD	
33	203020	POD SIDE FELT	
34	221102	RED MOMENTARY ROCKER SWITCH (BLACK BODY / RED ILLUMINATION WINDOW)	
35	229426	HENRY CLIPHOLDER	
36	227120	HANDLE	
37	229614	MOTOR PLATE BI-MATERIAL	