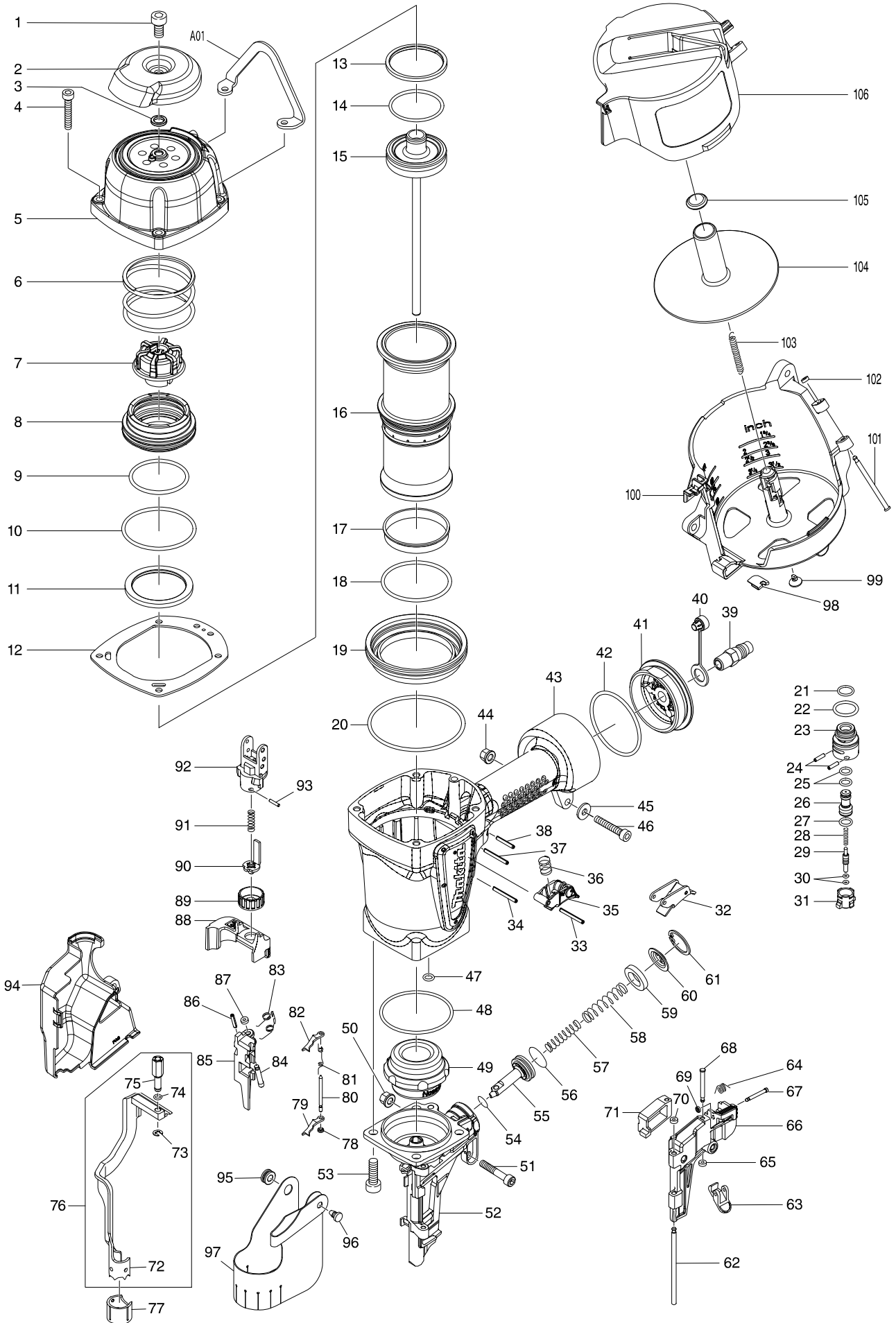


# Model No. AN902 COIL NAILER



# Model No. AN902 COIL NAILER

Item	Parts No.	Description	I/C	QTY	N/O	Opt. 1	Opt. 2	NOTE
001	BA00000263	HEX. SOCKET HEAD BOLT M8X16		1		155		
002	BA00000264	EXHAUST COVER		1		155		
003	BA00000005	RUBBER PAD 10		1		155		
004	BA00000265	HEX. SOCKET HEAD BOLT M6X35		4		155		
005	BA00000352	TOP CAP COMPLETE		1		100		
006	BA00000353	COMPRESSION SPRING		1		100		
007	BA00000354	REAR CUSHION		1		100		
008	BA00000355	HEAD VALVE		1		100		
009	BA00000356	O-RING		1		100		
010	BA00000290	O-RING 64		1		100		
011	BA00000357	COLLAR		1		100		
012	BA00000273	TOP CAP GASKET		1		100		
013	BA00000358	PISTON RING		1		100		
014	BA00000359	O-RING		1		100		
015	BA00000360	DRIVER UNIT		1		100		
016	BA00000361	CYLINDER		1		100		
017	BA00000362	CYLINDER RING		1		100		
018	BA00000363	O-RING		1		100		
019	BA00000364	CYLINDER SPACER		1		100		
020	BA00000280	O-RING 85		1		100		
021	BA00000026	O-RING 12		1		155		
022	BA00000028	O-RING 19		1		155		
023	BA00000027	TRIGGER VALVE GUIDE		1		155		
024	BA00000036	SPRING PIN 3-12		2		155		
025	BA00000030	O-RING 6		2		155		
026	BA00000029	PILOT VALVE		1		155		
027	BA00000031	O-RING 9		1		155		
028	BA00000032	COMPRESSION SPRING 3		1		155		
029	BA00000033	TRIGGER VALVE STEM		1		155		
030	BA00000034	O-RING 3		2	*	155		
030-1	BA00000034	O-RING 3	O	2		155		
031	BA00000035	TRIGGER VALVE CASE		1		155		
032	BA00000039	TRIGGER ASSY		1		100		
033	BA00000038	SPRING PIN 3-30		1		155		
034	BA00000038	SPRING PIN 3-30		1		155		
035	BA00000040	SEQUENTIAL TRIGGER		1		100		
036	BA00000102	COMPRESSION SPRING 10		1		155		
037	BA00000038	SPRING PIN 3-30		1		155		
038	BA00000037	SPRING PIN 3-22		1		155		
041	BA00000393	END CAP		1		100		
042	BA00000356	O-RING		1		100		
043	BA00000286	HOUSING COMPLETE		1		100		
044	BA00000250	BOLT CAP		1		155		
045	BA00000245	FLAT WASHER		1		100		
046	BA00000265	HEX. SOCKET HEAD BOLT M6X35		1		155		
047	BA00000387	O-RING		1		100		
048	BA00000290	O-RING 64		1		100		
049	BA00000388	FRONT CUSHION		1		100		

# Model No. AN902 COIL NAILER

Item	Parts No.	Description	I/C	QTY	N/O	Opt. 1	Opt. 2	NOTE
050	BA00000250	BOLT CAP		1		155		
051	BA00000289	HEX. SOCKET HEAD BOLT M6X38		1		100		
052	BA00000367	NOSE PIECE		1		100		
053	BA00000292	HEX. SOCKET HEAD BOLT M8X25		4		155		
054	BA00000293	O-RING 10		1		155		
055	BA00000368	FEED PISTON		1		100		
056	BA00000295	O-RING 21		1		155		
057	BA00000369	PUSHER-SPRING A		1		100		
058	BA00000296	COMPRESSION SPRING 10		1		155		
059	BA00000298	RUBBER RING 16		1		155		
060	BA00000299	CUP WASHER 5		1		155		
061	BA00000300	RETAINING RING R-26		1		155		
062	BA00000309	PIN 4		1		100		
063	BA00000301	LOCK LEVER		1		100		
064	BA00000370	LATCH SPRING		1		100		
065	BA00000306	URETHANE RING 3		1		100		
066	BA00000371	DOOR		1		100		
067	BA00000304	PIN 3		1		100		
068	BA00000305	PIN 3.5		1		100		
069	BA00000060	URETHANE RING 2		1		155		
070	BA00000306	URETHANE RING 3		1		100		
071	BA00000373	NAIL STOP		1		100		
072	BA00000375	SAFETY A		1		100		
073	BA00000083	STOP RING E-4		1		100		
074	BA00000081	O-RING 5		1		100		
075	BA00000317	ADJUSTER LOD		1		100		
076	BA00000374	SAFETY A UNIT		1		100		
077	BA00000372	PROTECTIVE CASING		1		100		
078	BA00000060	URETHANE RING 2		1		155		
079	BA00000333	CHECK CLAW		1		100		
080	BA00000335	PIN 3		1		100		
081	BA00000334	TORSION SPRING 4		1		100		
082	BA00000333	CHECK CLAW		1		100		
083	BA00000338	TORSION SPRING 6		1		100		
084	BA00000337	PIN 4.5		1		100		
085	BA00000384	FEED FINGER		1		100		
086	BA00000339	SPRING PIN 3-16		1		100		
087	BA00000306	URETHANE RING 3		1		100		
088	BA00000316	ADJUSTER GUIDE		1		100		
089	BA00000077	ADJUSTER		1		100		
090	BA00000315	STOPPER		1	*	100		
090-1	BA00000484	STOPPER	S	1		100		
091	BA00000314	COMPRESSION SPRING 5		1	*	100		
091-1	BA00000482	COMPRESSION SPRING 8	S	1		100		
092	BA00000313	HOLDER		1	*	100		
092-1	BA00000485	HOLDER	S	1		100		
093	BA00000074	SPRING PIN 2.5-10		1		100		
094	BA00000385	SPRING COVER		1		100		

