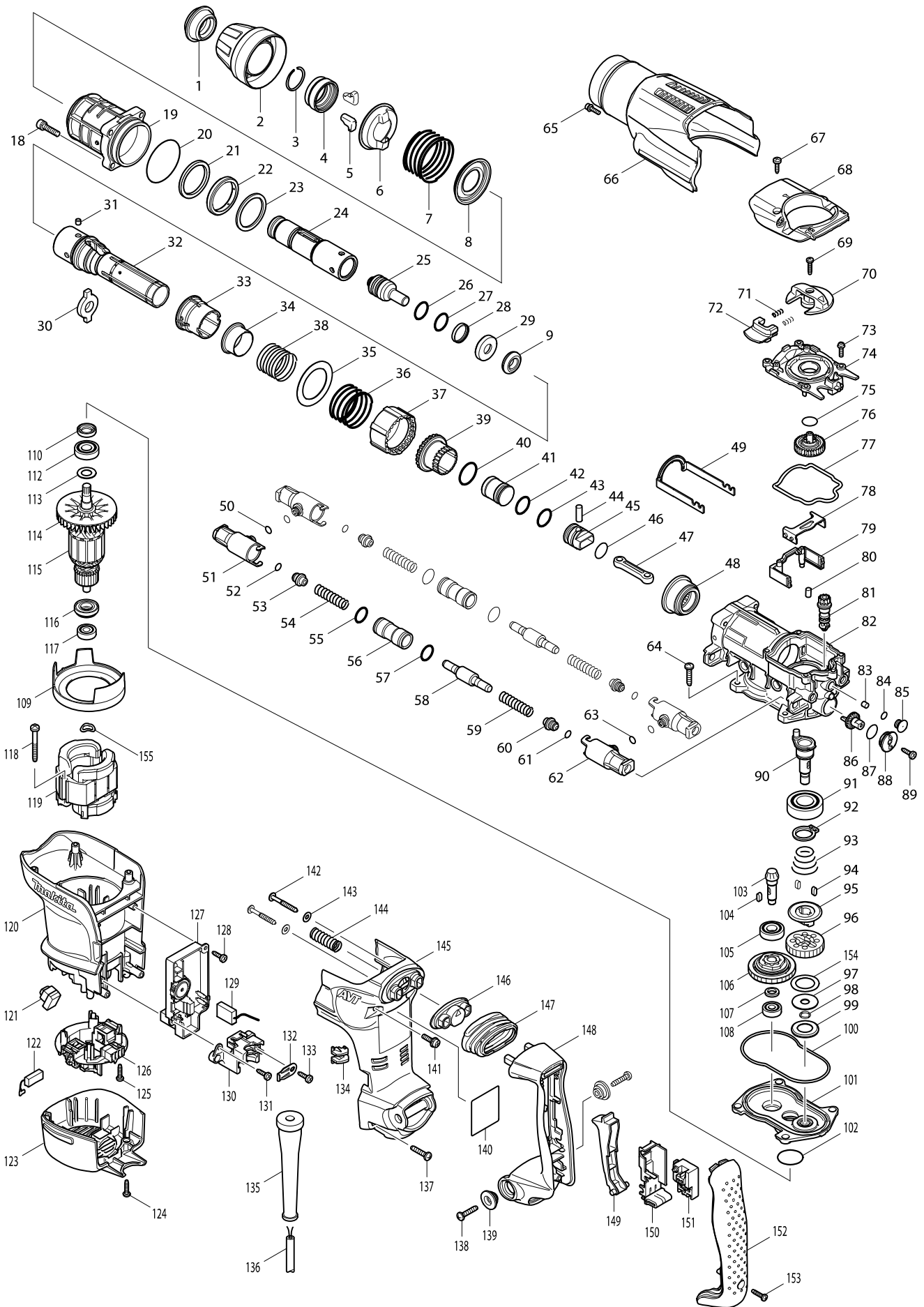


Model No. HR3541FC COMBINATION HAMMER 35MM



Model No. HR3541FC COMBINATION HAMMER 35MM

Item	Parts No.	Description	I/C	QTY	N/O	Opt. 1	Opt. 2	NOTE
001	286269-2	TOOL HOLDER CAP		1	100			
002	450592-3	CHUCK COVER		1	100			
003	231984-3	RING SPRING 25		1	100			
004	331823-8	CHUCK RING		1	100			
005	310257-8	TOOL RETAINER		2	100			
006	345928-8	SPRING GUIDE		1	100			
007	234063-6	COMPRESSION SPRING 52		1	100			
008	345976-7	SPRING HOLDER		1	100			
009	424110-3	RUBBER RING 13		1	100			
018	922341-3	HEX. SOCKET HEAD BOLT M6X25		4	100			
019	158674-2	BARREL COMPLETE		1	100			
C10	213498-4	OIL SEAL 32		1	100			
C20	213533-8	O-RING 39		1	100			
C30	214508-0	PLANE BEARING 38		1	100			
020	213656-2	O RING 53		1	100			
021	257294-0	RING 38		1	100			
022	262143-8	URETHANE RING 38		1	100			
023	267381-7	FLAT WASHER 39		1	100			
024	324900-3	TOOL HOLDER		1	100			
025	324901-1	IMPACT BOLT		1	100			
026	213309-3	O RING 19		1	100			
027	213309-3	O RING 19		1	100			
028	213996-8	FLUORO CARBON RESIN RING 24		1	100			
029	324899-2	RING 13		1	100			
030	324838-2	SLIDE PLATE		1	100			
031	256266-2	PIN 6		4	100			
032	331822-0	CYLINDER 25		1	100			
033	450243-8	SLIDE SLEEVE		1	100			
034	331805-0	RING 29		1	100			
035	267360-5	FLAT WASHER 40		1	100			
036	234052-1	COMPRESSION SPRING 42		1	100			
037	450236-5	LOCK SLEEVE		1	100			
038	234050-5	COMPRESSION SPRING 34		1	100			
039	331795-7	DRIVING SLEEVE		1	100			
040	213434-0	O RING 26		1	100			
041	324898-4	STRIKER		1	100			
042	213283-5	O-RING 18		1	100			
043	213283-5	O-RING 18		1	100			
044	256087-2	PIN 7		1	100			
045	324918-4	PISTON		1	100			
046	213262-3	O RING 18		1	100			
047	450235-7	CONECTING ROD		1	100			
048	227531-6	SPIRAL BEVEL GEAR 37		1	100			
049	345867-2	LINK ARM		1	100			
050	213030-4	O RING 8		2	100			
051	450248-8	PIPE HOLDER		2	100			
052	213030-4	O RING 8		2	100			
053	450239-9	SPRING GUIDE		2	100			

Model No. HR3541FC COMBINATION HAMMER 35MM

Item	Parts No.	Description	I/C	QTY	N/O	Opt. 1	Opt. 2	NOTE
054	234048-2	COMPRESSION SPRING 10		2		100		
055	213275-4	O RING 18		2		100		
056	331800-0	PIPE 15		2		100		
057	213275-4	O RING 18		2		100		
058	324862-5	COUNTER WEIGHT		2		100		
059	234048-2	COMPRESSION SPRING 10		2		100		
060	450239-9	SPRING GUIDE		2		100		
061	213030-4	O RING 8		2		100		
062	450248-8	PIPE HOLDER		2		100		
063	213030-4	O RING 8		2		100		
064	266041-8	TAPPING SCREW 5X25		4		100		
065	922128-3	HEX. SOCKET HEAD BOLT M4X16		1		100		
066	450593-1	CRANK HOUSING COVER		1		100		
067	266192-7	TAPPING SCREW 4X14		2		100		
068	318201-9	CRANK CAP COVER		1		100		
069	265995-6	TAPPING SCREW 4X18		1		100		
070	450249-6	CHANGE LEVER		1		100		
071	233436-0	COMPRESSION SPRING 3		2		100		
072	450250-1	LOCK BUTTON		1		100		
073	911128-8	P.H.SCREW M4X16 WITH WR		5		100		
074	450241-2	CRANK CAP		1		100		
075	213223-3	O RING 16		1		100		
076	158437-6	SPUR GEAR 33 COMPLETE		1		100		
077	424064-4	SEAL RING B		1		100		
078	345868-0	LINK PLATE		1		100		
079	450247-0	AIR PIPE		1	*	100		
079-1	453866-1	AIR PIPE	<	1		100		
080	263005-3	RUBBER PIN 6		2		100		
081	450242-0	GEAR SHAFT		1	*	100		
081-1	452126-8	GEAR SHAFT	S	1		100		
082	158712-0	CRANK HOUSING COMPLETE		1	*	100		
C10	213579-4	O-RING 44		1	*	100		
082-1	158712-0	CRANK HOUSING COMPLETE	O	1		100		
C10	213579-4	O-RING 44		1		100		
083	443138-2	FILTER		1		100		
084	213030-4	O RING 8		1		100		
085	450238-1	FILTER CAP		1		100		
086	450244-6	CRANK GEAR		1		100		
087	213223-3	O RING 16		1	*	100		
087-1	213176-6	O RING 14	<	1		100		
088	450237-3	CAP HOLDER		1		100		
089	266192-7	TAPPING SCREW 4X14		1		100		
090	324839-0	CRANK SHAFT		1		100		
091	211332-2	BALL BEARING 6004LLU		1		100		
092	961060-6	RETAINING RING S-20		1		100		
093	231991-6	CONICAL COMP. SPRING 21-31		1		100		
094	254239-9	KEY 4		2		100		
095	324848-9	CLUTCH		1		100		

Model No. HR3541FC COMBINATION HAMMER 35MM

Item	Parts No.	Description	I/C	QTY	N/O	Opt. 1	Opt. 2	NOTE
096	227188-3	SPUR GEAR 33		1		100		
097	253197-6	FLAT WASHER 10		1		100		
098	961036-3	RETAINING RING WR-10		1		100		
099	345869-8	CUP WASHER 18		1		100		
100	424063-6	SEAL RING A		1		100		
101	158534-8	GEAR HOUSING COMPLETE		1		100		
102	213415-4	O RING 28		1		100		
103	227533-2	SPIRAL BEVEL GEAR 9		1		100		
104	254239-9	KEY 4		1		100		
105	210105-0	BALL BEARING 6001LLU		1		100		
106	125421-6	TORQUE LIMITER ASS'Y		1		100		
107	257291-6	RING 10		1		100		
108	210005-4	BALL BEARING 608DDW		1		100		
109	450251-9	BAFFLE PLATE		1		100		
110	213133-4	OIL SEAL 12		1		100		
112	210105-0	BALL BEARING 6001LLU		1		100		
113	253084-9	FLAT WASHER 12		1		100		
114	241863-7	FAN 70		1		100		
D10		INC. 112-114,116,117						
115A	513746-4	ARMATURE ASS'Y 115V		1		151		
115B	513748-0	ARMATURE ASS'Y 220-240V		1		151		
116	681650-6	INSULATION WASHER		1		100		
117	210005-4	BALL BEARING 608DDW		1		100		
118	266056-5	TAPPING SCREW 5X45		2		100		
119A	625810-0	FIELD 100-115V		1		152		
119B	625813-4	FIELD 220-240V		1		152		
120	450260-8	MOTOR HOUSING		1		100		
121	631785-3	LED CIRCUIT		1		100		
122	194160-9	CARBON BRUSH CB-350		1		100		
123	450253-5	REAR COVER		1		100		
124	265995-6	TAPPING SCREW 4X18		2		100		
125	265995-6	TAPPING SCREW 4X18		4		100		
126	638519-5	BRUSH HOLDER UNIT		1	*	100		
126-1	638646-8	BRUSH HOLDER UNIT	X	1		100		
127A	631781-1	CONTROLLER		1		100		
127B	631783-7	CONTROLLER		1		100		
128	266192-7	TAPPING SCREW 4X14		1	*	100		
128-1	266901-4	TAPPING SCREW 4X14	<	1				
129	638406-8	LEAD UNIT		1		100		
130	450246-2	CORD CLAMP BASE		1		100		
131	266192-7	TAPPING SCREW 4X14		1	*	100		
131-1	266901-4	TAPPING SCREW 4X14	<	1				
132	687169-3	STRAIN RELIEF		1		100		
133	266192-7	TAPPING SCREW 4X14		1		100		
134	450240-4	LENS		1		100		
135	682560-0	CORD GUARD 10		1		100		
136A	695228-9	POWER SUPPLY CORD 1.5-2-4.0		1		100		
136B	692623-4	POWER SUPPLY CORD 1.5-2-4.0		1		100		

