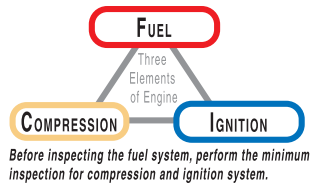
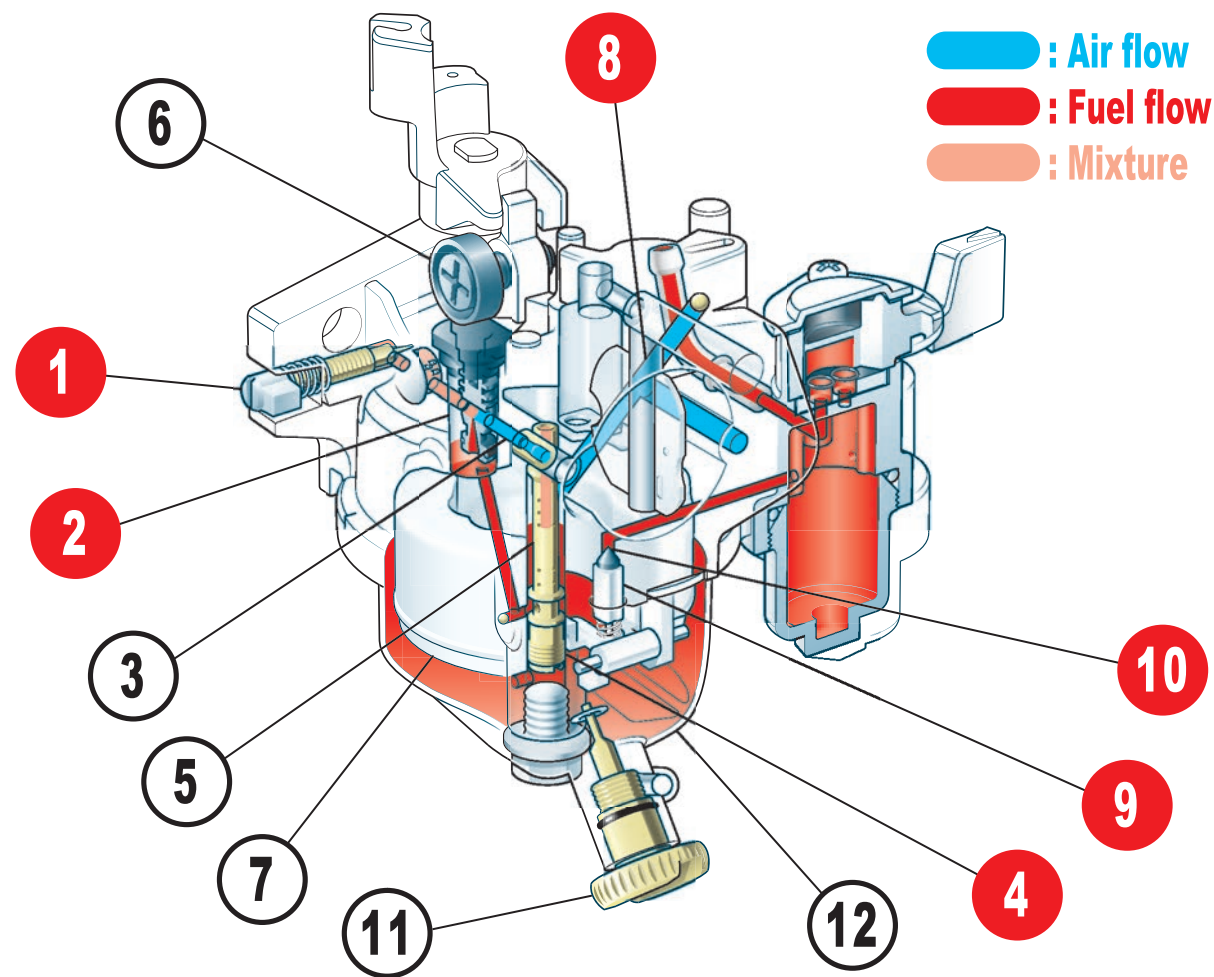


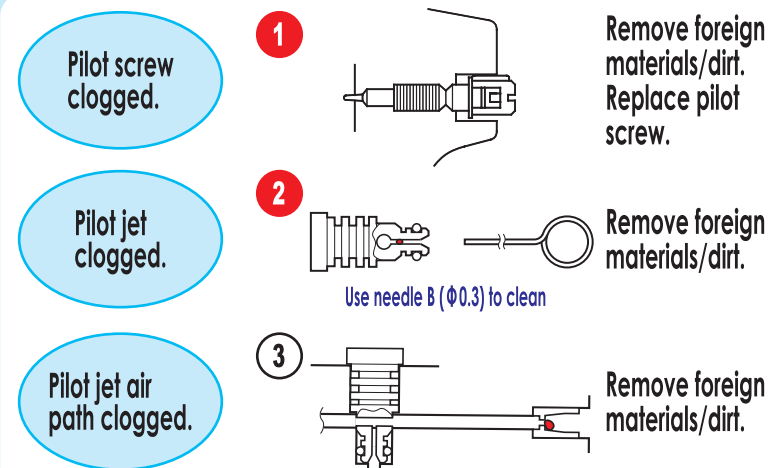
GX120/140/160/200/240/270/340/390 Carburetor Check Sheet



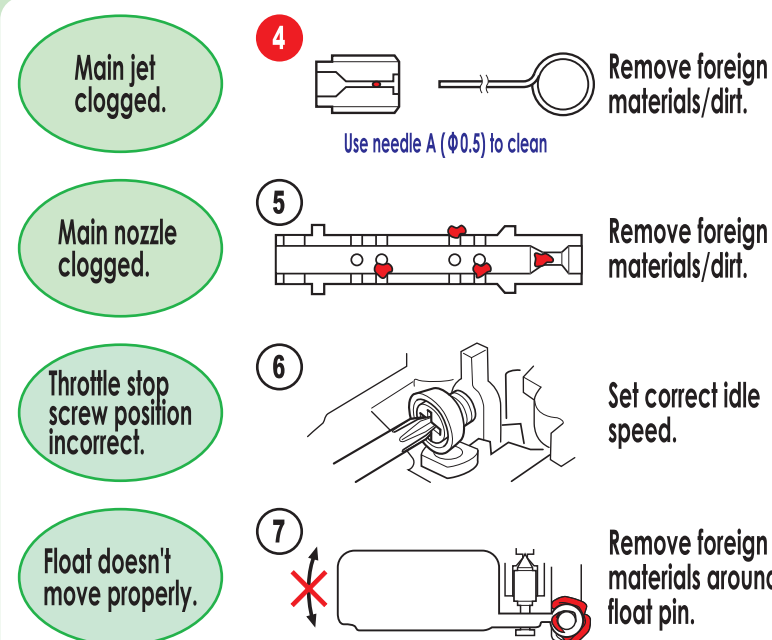
1 2 4 8 9 10 : Priority check Points



- ◆ Unstable idle speed
- ◆ Poor performance at low speed

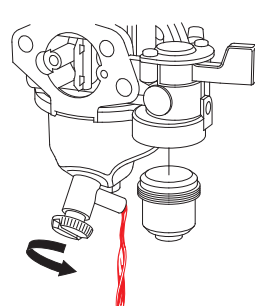


- ◆ Engine does not start or stop
- ◆ Hard starting
- ◆ Engine starts but quickly stops



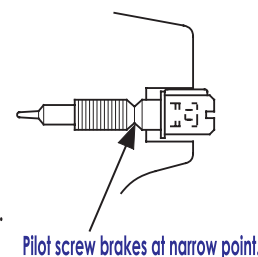
- ◆ For long storage of the engine (More than 3 months).

Drain gasoline from float chamber by running the engine until it stops or by loosening the drain screw while engine is stopped. Take off strainer cup and pour gasoline in an appropriate.

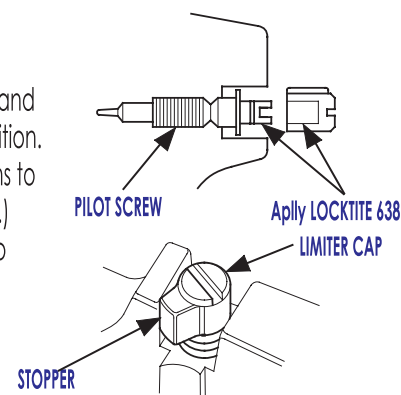


Pilot screw and limiter cap replacement

When the cap is removed, the pilot screw breaks at the middle of its thread. To remove the remaining screw, fit an appropriate rubber tube over the remaining screw and turn it.

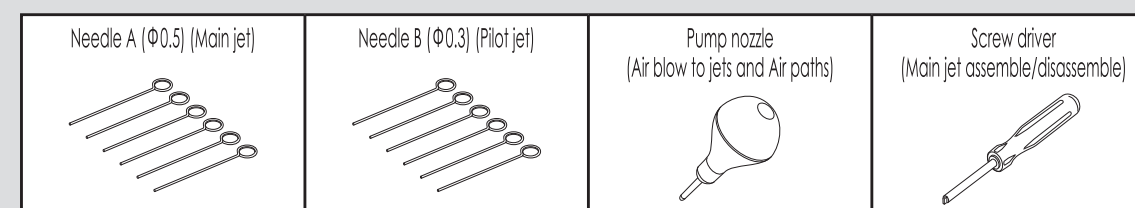


Install a new pilot screw and set it to the specified position. (Refer to "Number of turns to back off the pilot screw".) Then install the limiter cap with LOCTITE 638.

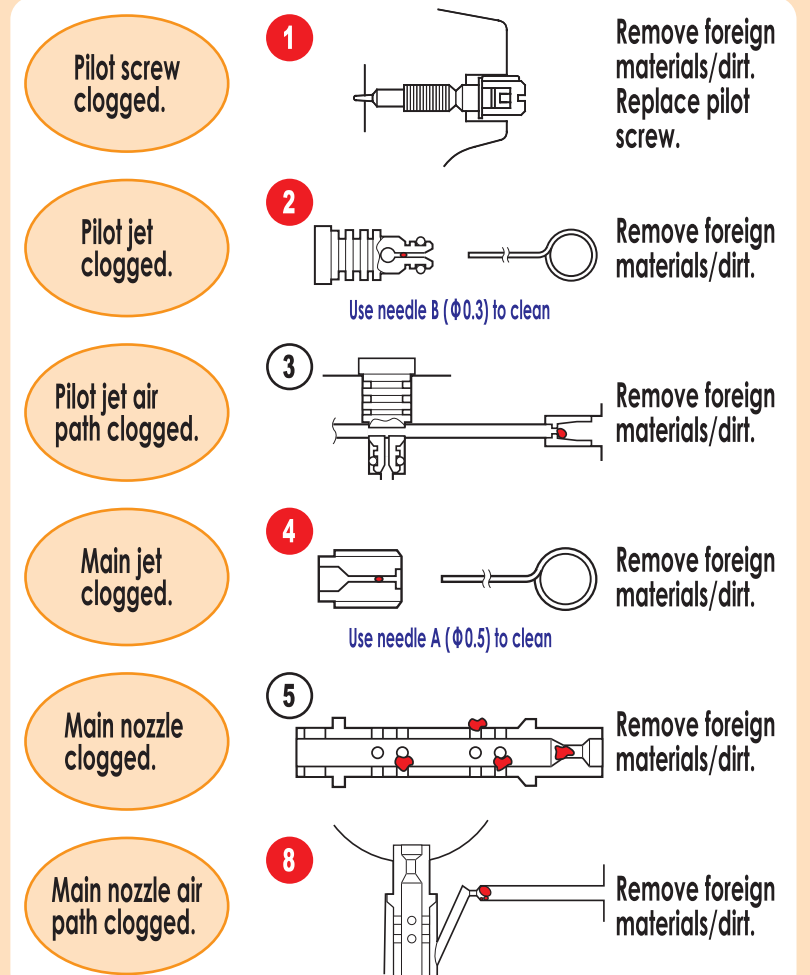


Using of Carburetor Cleaning Kit (Kit No.07JPZ-0010000)

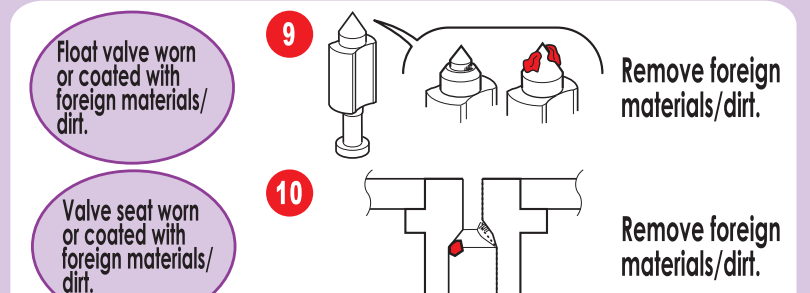
Carburetor cleaning kit is useful to remove foreign materials/dirt.



- ◆ Engine speed does not increase
- ◆ Poor performance at high speed
- ◆ Unstable engine speed



- ◆ Overflow
- ◆ Gasoline leaks



Check of float chamber

Water inside Float chamber cause engine failure. Take off Float chamber and clean or replace.

