

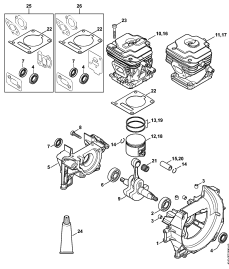
**02-2018-D-GB**



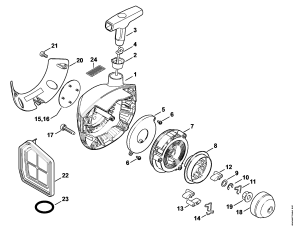
**Table of contents**

---

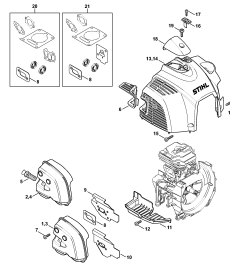
FS 360 C, FS 410 C	4
Crankcase, Cylinder	6
Rewind starter	8
Muffler, Shroud	10
Fuel tank	12
Spacer flange, Air filter	14
Carburetor	17
Carburetor	19
Carburetor WTF-10, WTF-11, WTF-5, WTF-6	21
Ignition system	23
Clutch, Clutch housing	25
AV system	27
Drive tube assembly	29
Bike handle	31
Gear head	33
Deflector	35
Transport guard	37
Tools, Full harness	39
Serial number	41



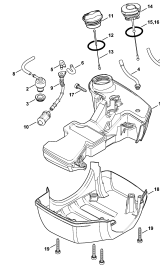
Crankcase, Cylinder



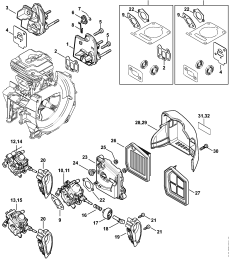
Rewind starter



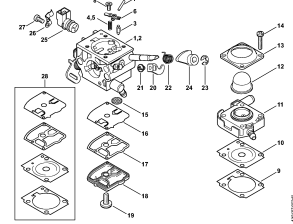
Muffler, Shroud



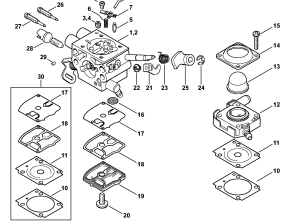
Fuel tank



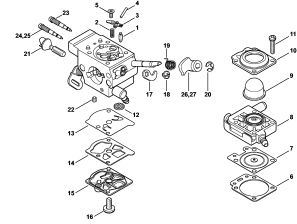
Spacer flange, Air filter



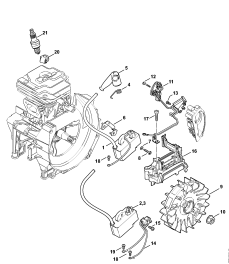
Carburetor



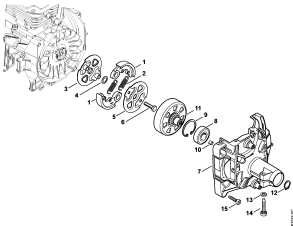
Carburetor



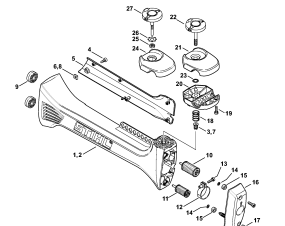
Carburetor WTF-10, WTF-11, WTF-5, WTF-6



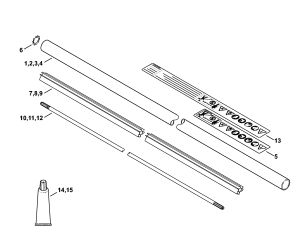
Ignition system



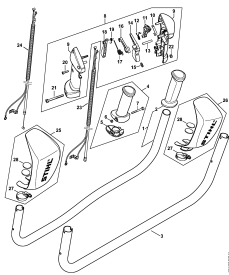
Clutch, Clutch housing



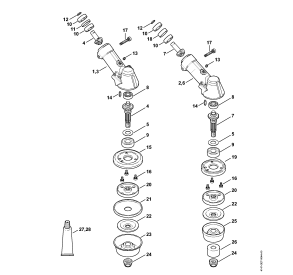
AV system



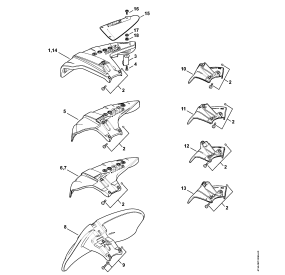
Drive tube assembly



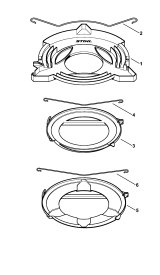
Bike handle



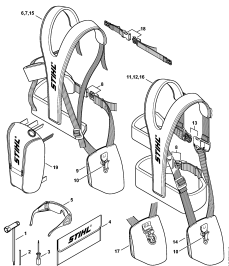
Gear head



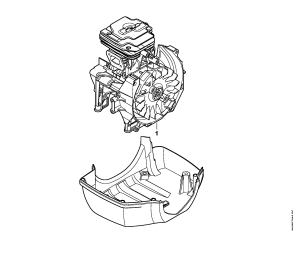
Deflector



Transport guard



Tools, Full harness

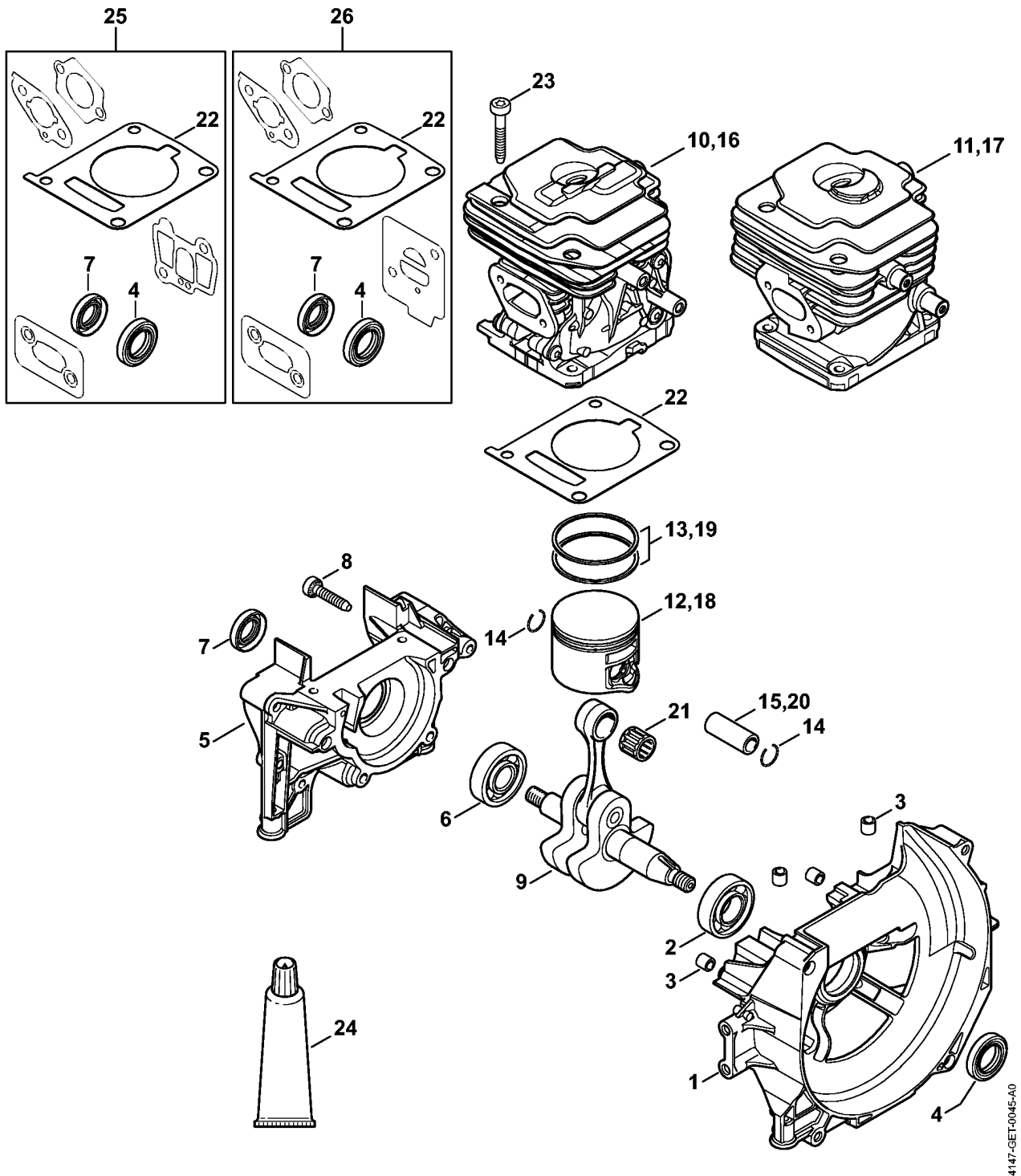


Serial number

## FS 360 C, FS 410 C

Description	Technical Information
Crankcase, Cylinder	
Rewind starter	
Muffler, Shroud	
Fuel tank	
Spacer flange, Air filter	
Carburetor	
Carburetor	
Carburetor WTF-10, WTF-11, WTF-5, WTF-6	
Ignition system	
Clutch, Clutch housing	
AV system	
Drive tube assembly	
Bike handle	
Gear head	
Deflector	
Transport guard	
Tools, Full harness	
Serial number	

**Crankcase, Cylinder**



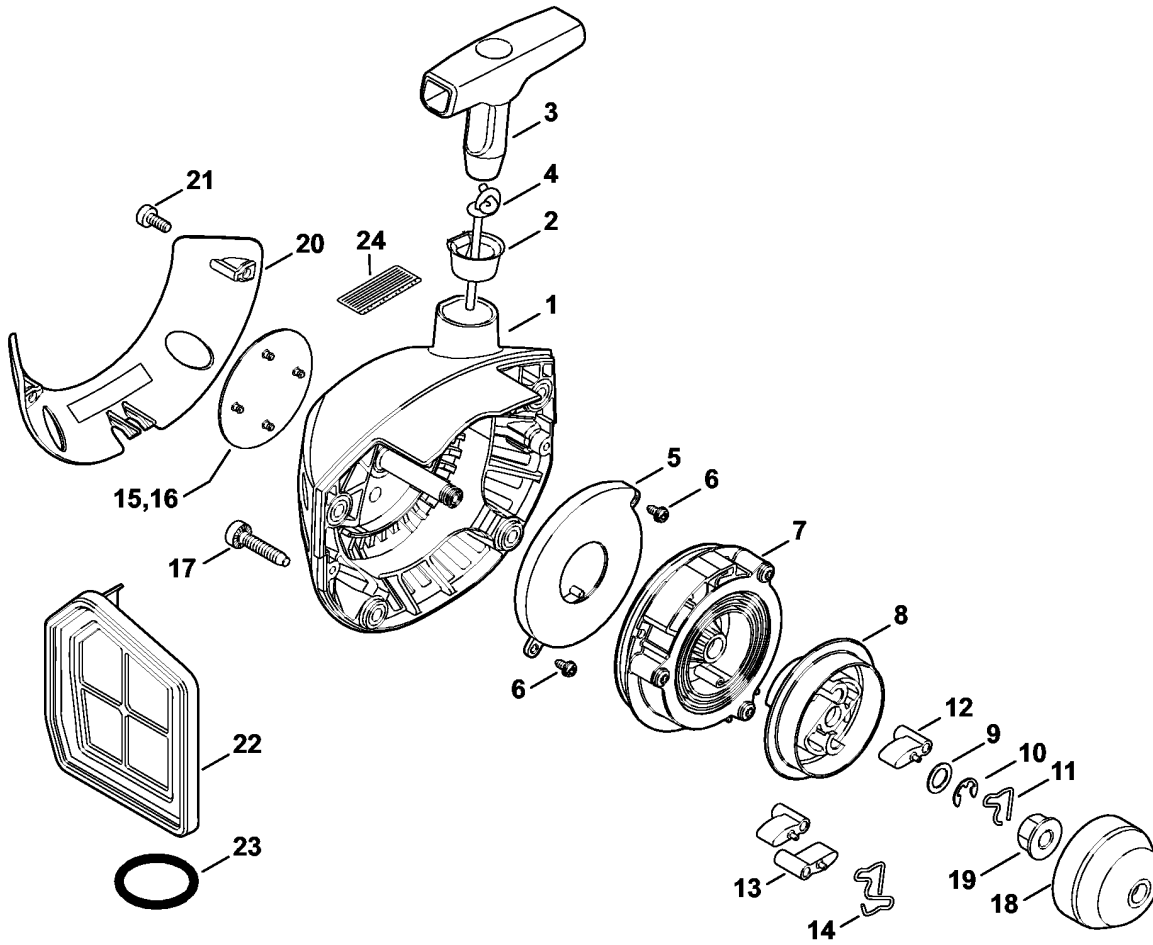
(1) FS 360 C-E, (2) FS 360 C-E Z, (3) FS 360 C-EM, (4) FS 360 C-EM Z, (5) FS 410 C-E, (6) FS 410 C-E K, (7) FS 410 C-E KZ, (8) FS 410 C-E L, (9) FS 410 C-EM, (10) FS 410 C-EM K, (11) FS 410 C-EM KZ, (12) FS 410 C-EM L

## Crankcase, Cylinder

Reference	Item number	Qty	Description	Contains	Technical Information
1	4147 020 2602	1	Crankcase, fan side	2 - 4	
2	9503 003 0310	1	Grooved ball bearing 6002		
3	0000 988 8600	4	Sleeve		
4	9639 003 1585	1	Oil seal 15x25x5		
5	4147 020 2904	1	Crankcase	6, 7	
6	9503 003 0242	1	Grooved ball bearing 6201		
7	9640 003 1195	1	Oil seal 12x22x5		
8	9075 478 4159	4	Pan head self-tapping screw IS-D5x24		
9	4147 030 0403	1	Crankshaft		25.2005
10	4147 020 1206	1	Cylinder with piston Ø 40 mm (1,2,3,4)	12 - 15	
11	* 4147 020 1203	1	Cylinder with piston Ø 40 mm (1,2)	12 - 15	2.2014
12	4147 030 2003	1	Piston Ø 40 mm (1,2,3,4)	13 - 15	
13	4147 034 3003	2	Piston ring Ø 40x1.2 mm (1,2,3,4)		
14	9463 650 1100	2	Snap ring 11		
15	4147 034 1500	1	Piston pin 11x7x24 (1,2,3,4)		
16	4147 020 1207	1	Cylinder with piston Ø 42 mm (5,6,7,8,9,10,11,12)	14, 18 - 20	
17	* 4147 020 1204	1	Cylinder with piston Ø 42 mm (5,6,7,8)	14, 18 - 20	14.2013
18	4147 030 2011	1	Piston Ø 42 mm (5,6,7,8,9,10,11,12)	14, 19, 20	
19	4147 034 3004	2	Piston ring Ø 42x1.2 mm (5,6,7,8,9,10,11,12)		
20	4147 034 1501	1	Piston pin 11x7x28 (5,6,7,8,9,10,11,12)		
21	9512 003 2349	1	Needle cage 11x14x12,5		
22	4147 029 2300	1	Cylinder gasket		
23	9075 478 4167	4	Pan head self-tapping screw IS-D5x32		
24	0783 830 2000	1	Tube of sealant HT red (B)		
25	4147 007 1602	1	Set of gaskets (B) (1,2,3,4,5,6,7,8,9,10,11,12)	4, 7, 22	
26	* 4147 007 1601	1	Set of gaskets (B) (1,2,5,6,7,8)	4, 7, 22	2.2014 14.2013

(1) FS 360 C-E, (2) FS 360 C-E Z, (3) FS 360 C-EM, (4) FS 360 C-EM Z, (5) FS 410 C-E, (6) FS 410 C-E K, (7) FS 410 C-E KZ, (8) FS 410 C-E L, (9) FS 410 C-EM, (10) FS 410 C-EM K, (11) FS 410 C-EM KZ, (12) FS 410 C-EM L

**Rewind starter**



5903ET030 SC

(1) FS 360 C-E, (2) FS 360 C-E Z, (3) FS 360 C-EM, (4) FS 360 C-EM Z, (5) FS 410 C-E, (6) FS 410 C-E K, (7) FS 410 C-E KZ, (8) FS 410 C-E L, (9) FS 410 C-EM, (10) FS 410 C-EM K, (11) FS 410 C-EM KZ, (12) FS 410 C-EM L

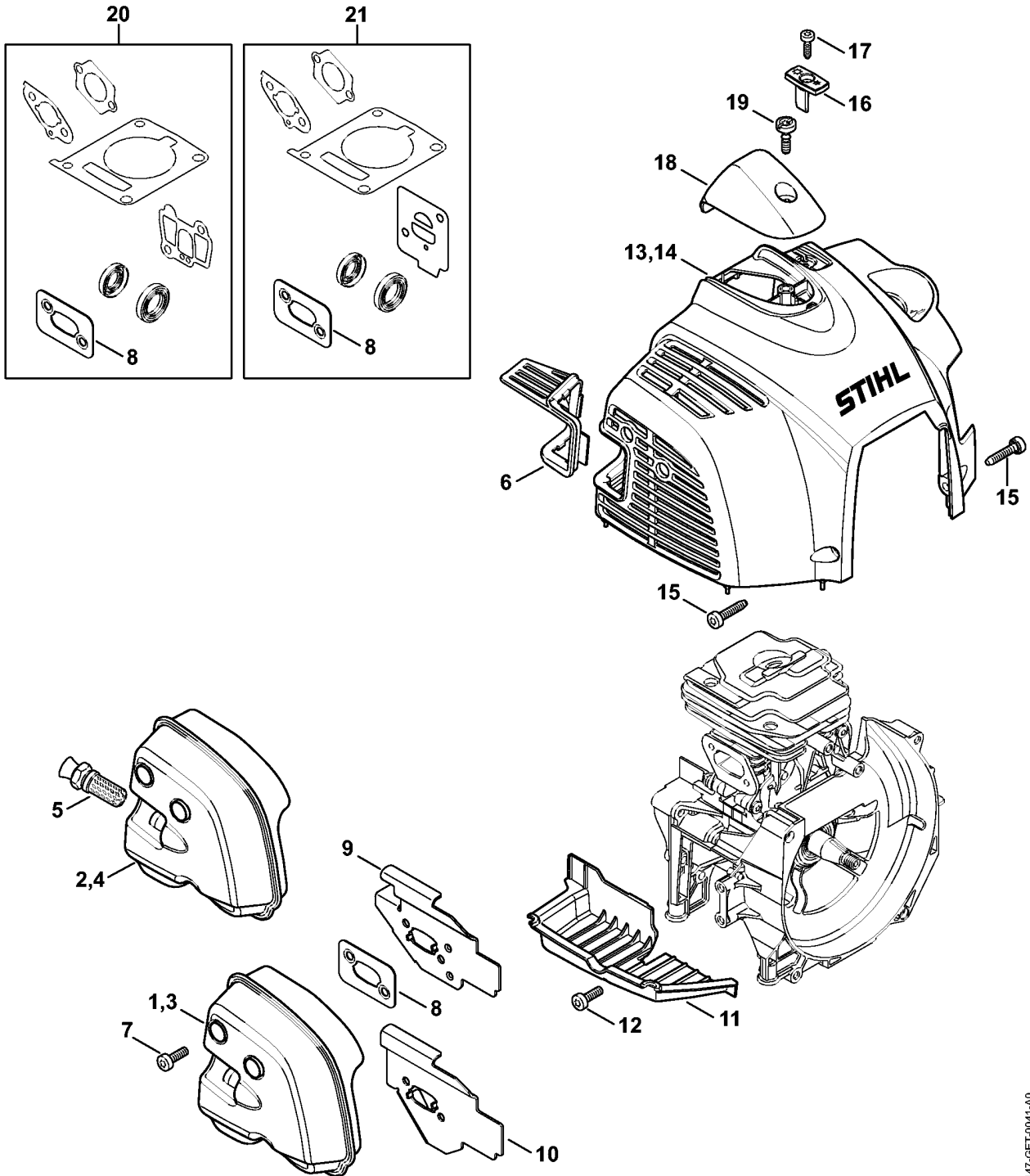


## Rewind starter

Reference	Item number	Qty	Description	Contains
	4147 190 4006	1	Rewind starter	1 - 12
1	4148 190 0400	1	Starter cover	2
2	1110 084 9102	1	Bushing	
3	1121 195 3400	1	Starter grip	
4	4147 195 8200	1	Starter rope Ø 3x1010 mm	
	0000 930 2298	1	Starter rope Ø 3 mm x 30.5 m (B)	
5	4147 190 0600	1	Rewind spring	
6	9104 003 0410	2	Self-tapping screw P3x6	
7	4147 190 1011	1	Rope rotor	
8	4147 195 2000	1	Carrier	
9	0000 958 0806	1	Washer	
10	9460 624 0600	1	E-clip 6	
11	1118 195 3500	1	Spring	
12	4116 195 7200	1	Pawl	
13	* 0000 195 7200	2	Pawl (1,2,5,6,7,8)	
14	* 1128 195 3500	1	Spring	
15	4147 967 1507	1	Model plate FS 360 C (1,2,3,4)	
16	4147 967 1508	1	Model plate FS 410 C (5,6,7,8,9,10,11,12)	
17	9075 478 4159	4	Pan head self-tapping screw IS-D5x24	
18	4147 195 0600	1	Starter cup	
19	0000 955 0802	1	Collar nut M8x1	
	4147 007 1013	1	Cover plate kit (B)	20 - 22
	* 4147 007 1001	1	Cover plate kit (B) (1,2,5,6,7,8)	20 - 23
20	4147 195 5400	1	Cover (B)	
21	9074 478 3005	2	Pan head self-tapping screw IS-P4x14 (B)	
22	4147 140 4400	1	Air filter (B)	
23	* 9645 948 7735	1	O-ring 25x3.5 (B) (1,2,5,6,7,8)	
24	0000 967 4065	1	Warning Spark arresting screen USA (2)	

(1) FS 360 C-E, (2) FS 360 C-E Z, (3) FS 360 C-EM, (4) FS 360 C-EM Z, (5) FS 410 C-E, (6) FS 410 C-E K, (7) FS 410 C-E KZ, (8) FS 410 C-E L, (9) FS 410 C-EM, (10) FS 410 C-EM K, (11) FS 410 C-EM KZ, (12) FS 410 C-EM L

**Muffler, Shroud**



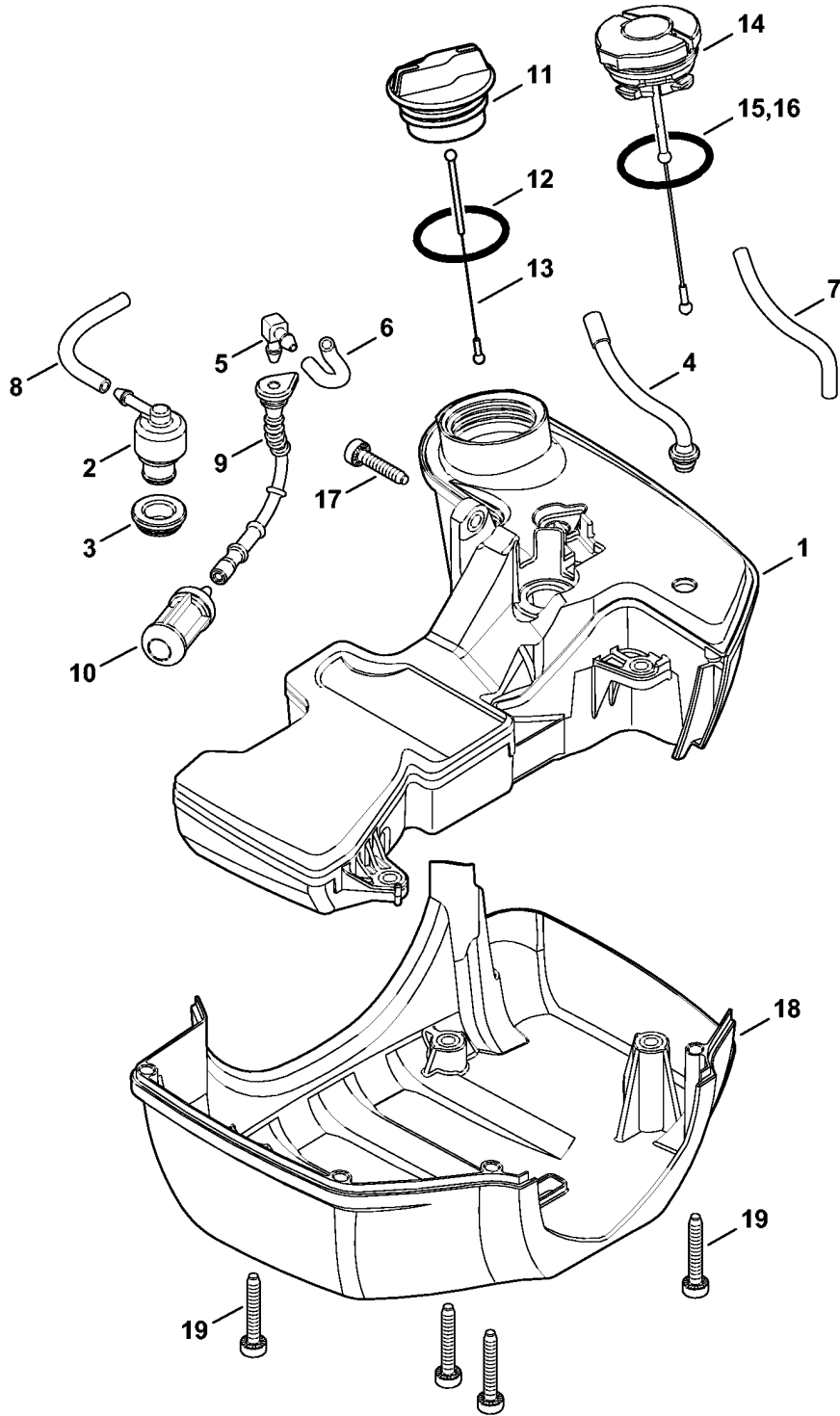
4147-GET-0041-A0

(1) FS 360 C-E, (2) FS 360 C-E Z, (3) FS 360 C-EM, (4) FS 360 C-EM Z, (5) FS 410 C-E, (6) FS 410 C-E K, (7) FS 410 C-E KZ, (8) FS 410 C-E L, (9) FS 410 C-EM, (10) FS 410 C-EM K, (11) FS 410 C-EM KZ, (12) FS 410 C-EM L

## Muffler, Shroud

Reference	Item number	Qty	Description	Contains	Technical Information
1	4147 140 0601	1	Muffler (1,3,5,6,8,9,10,12)		
2	4147 140 0606	1	Muffler USA, CDN, AUS, NZ (2,4,7,11)	5	
3	* 4147 140 0600	1	Muffler (1,5,6,8)		2.2014 14.2013
4	* 4147 140 0605	1	Muffler USA, CDN, AUS, NZ (2,7)	5	2.2014 14.2013
5	4147 140 6900	1	Stub with screen USA, CDN, AUS, NZ (2,7)		
6	4147 084 6800	1	Spacer USA, CDN, AUS, NZ (2,7)		
7	9022 341 0983	3	Spline screw IS-M5x16		
8	4147 149 0601	1	Muffler gasket		
9	4147 141 3201	1	Cooling plate		
10	* 4147 141 3200	1	Cooling plate (1,2,5,6,7,8)		2.2014 14.2013
11	4147 020 4000	1	Insert		
12	9022 341 0983	1	Spline screw IS-M5x16		
13	4147 080 1600	1	Shroud (1,2,5,6,7,8)		
14	4147 080 1601	1	Shroud (3,4,9,10,11,12)		
15	9075 478 4159	2	Pan head self-tapping screw IS-D5x24		
16	4147 084 4102	1	Shutter		
17	9074 478 3005	1	Pan head self-tapping screw IS-P4x14		
18	4147 080 0400	1	Cover	19	
19	9022 319 0981	1	Screw IS-M5x17		
20	4147 007 1602	1	Set of gaskets (B) (1,2,3,4,5,6,7,8,9,10,11,12)	8	
21	* 4147 007 1601	1	Set of gaskets (B) (1,2,5,6,7,8)	8	2.2014 14.2013

**Fuel tank**



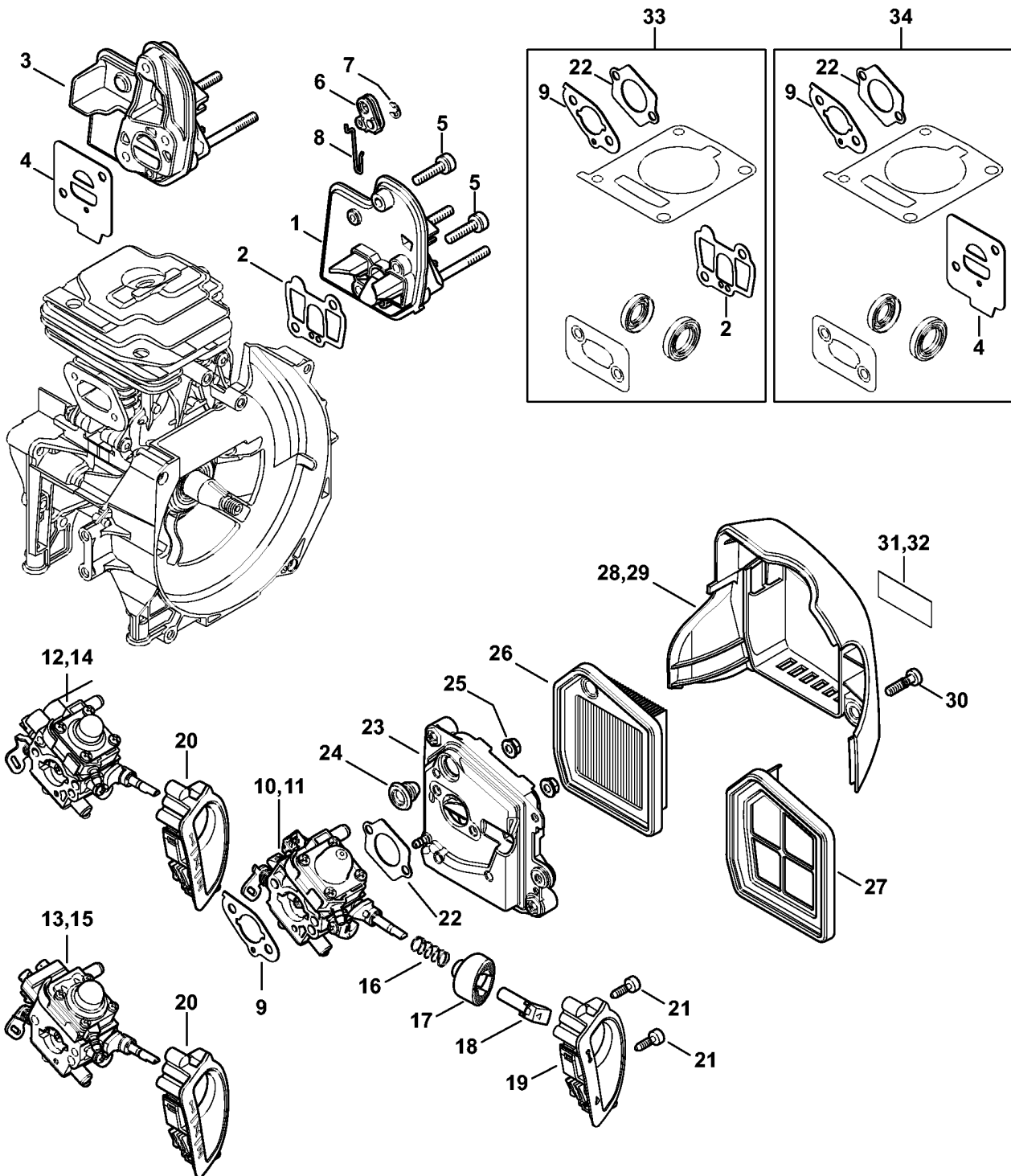
5903ET025 GM

## Fuel tank

Reference	Item number	Qty	Description	Contains	Up to	Technical Information
1	4147 350 0404	1	Fuel tank	2 - 6, 8 - 13		18.2012
2	4147 350 5802	1	Tank vent			
3	4223 353 9201	1	Grommet			
4	4147 358 0803	1	Hose			
5	4224 122 3900	1	Elbow connector			
6		1	Hose 3.1x5.7x53 mm, R5 (D)			
7	*	1	Hose 3.1x5.7x85 mm, R5 (D) (1,2,5,6,7,8)		174501159	18.2012
	0000 937 5004	1	Hose 3.1x5.7 mm x 1 m, R5 (B)			
8		1	Hose 3.1x5.7x60 mm, R3 (D)			
	0000 930 2803	1	Hose 3.1x5.7 mm x 1 m, R3 (B)			
	0712 923 8004	1	Hose 3.1x5.7 mm x 10 m, R3 (B)			
9	4147 358 0800	1	Hose			
10	0000 350 3521	1	Pickup body			
11	0000 350 0527	1	Filler cap	12, 13		
12	9645 951 3890	1	O-ring 35x3-FPM 80			
13	0000 350 0900	1	Rope			
14	* 0000 350 0533	1	Filler cap (1,2,5,6,7,8)	15	174501159	18.2012
15	* 9645 948 7734	1	O-ring 25x3.5 (1,2,5,6,7,8)		174501159	18.2012
16	9645 948 7735	1	O-ring 25x3.5 (B)			
17	9075 478 4159	1	Pan head self-tapping screw IS-D5x24			
18	4147 350 6600	1	Guard plate			
19	9075 478 4167	4	Pan head self-tapping screw IS-D5x32			

(1) FS 360 C-E, (2) FS 360 C-E Z, (3) FS 360 C-EM, (4) FS 360 C-EM Z, (5) FS 410 C-E, (6) FS 410 C-E K, (7) FS 410 C-E KZ, (8) FS 410 C-E L, (9) FS 410 C-EM, (10) FS 410 C-EM K, (11) FS 410 C-EM KZ, (12) FS 410 C-EM L

**Spacer flange, Air filter**



4147-GET-0045-A0

(1) FS 360 C-E, (2) FS 360 C-E Z, (3) FS 360 C-EM, (4) FS 360 C-EM Z, (5) FS 410 C-E, (6) FS 410 C-E K, (7) FS 410 C-E KZ, (8) FS 410 C-E L, (9) FS 410 C-EM, (10) FS 410 C-EM K, (11) FS 410 C-EM KZ, (12) FS 410 C-EM L

## Spacer flange, Air filter

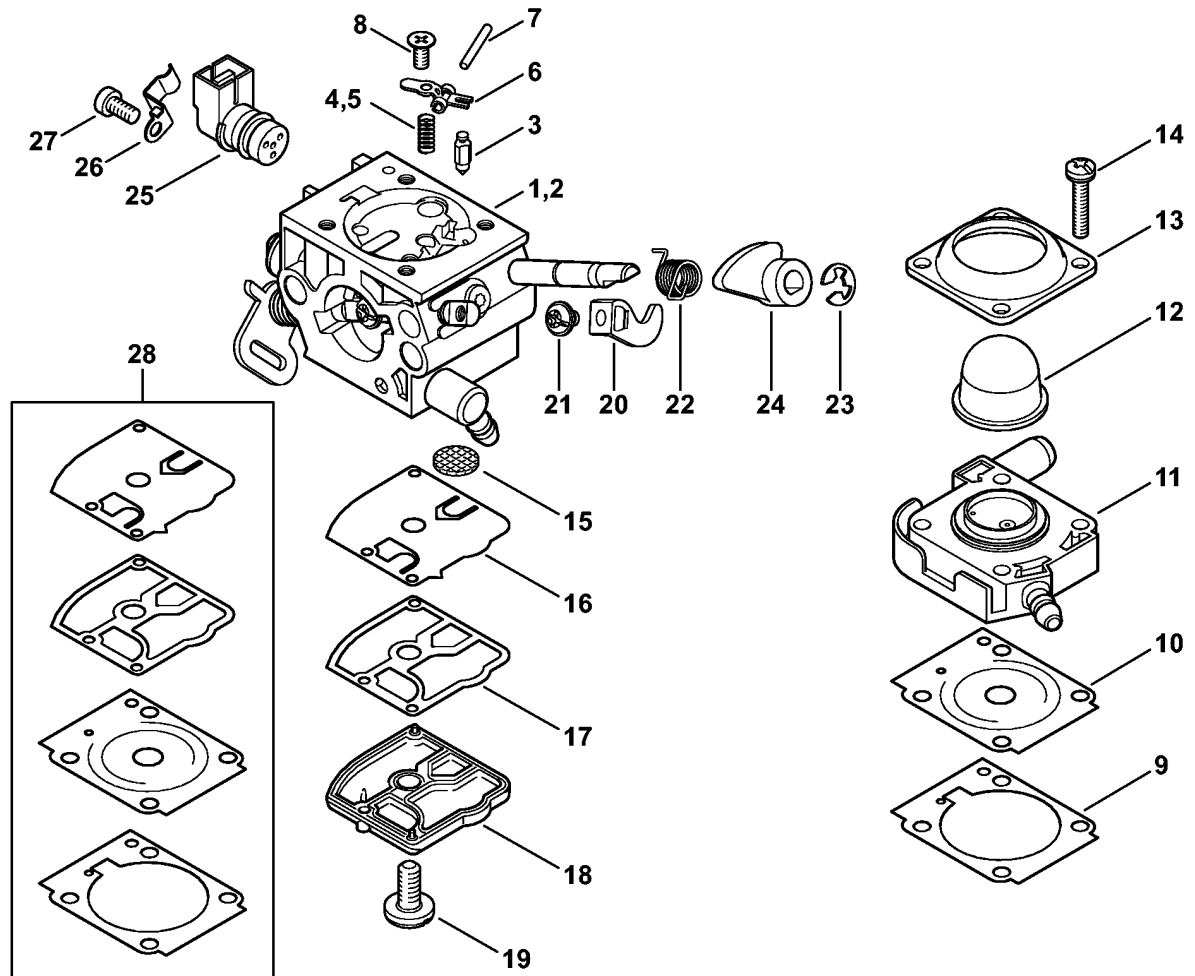
Reference	Item number	Qty	Description	Contains	Up to	Technical Information
1	4147 120 2301	1	Spacer flange (1, 2,3,4,5,6,7,8,9,10,11,12)			
2	4147 129 0903	1	Gasket (1,2,3,4,5,6,7,8,9,10,11,12)			
3	* 4147 120 2300	1	Spacer flange (1,2,5,6,7,8)			2.2014 14.2013
4	* 4147 129 0900	1	Gasket (1,2,5,6,7,8)			2.2014 14.2013
5	9022 341 1045	3	Spline screw IS-M5x24			
6	4147 182 2800	1	Lever			
7	9460 624 0400	1	E-clip 4			
8	4147 182 1500	1	Throttle rod			
9	4147 129 0901	1	Gasket			
10	4147 120 0621	1	Carburetor (9,10,11,12)			
11	4147 120 0622	1	Carburetor (3,4)			
12	* 4147 120 0625	1	Carburetor (1,2)			
13	* 4147 120 0600	1	Carburetor WTF-5A (1,2)			2.2014
14	* 4147 120 0624	1	Carburetor (5,6,7,8)			
15	* 4147 120 0601	1	Carburetor WTF-6A (5,6,7,8)			14.2013
16	0000 997 0842	1	Compression spring			
17	4147 182 2803	1	Lever			
18	4147 182 2802	1	Lever			
19	4147 141 9802	1	Grommet (3,4,9,10,11,12)			
20	4147 141 9800	1	Grommet (1,2,5,6,7,8)			
21	9074 478 3005	2	Pan head self-tapping screw IS-P4x14			
22	4147 129 0902	1	Gasket			
23	4147 140 2802	1	Filter housing	24		
24	4134 123 7500	1	Grommet			
25	9216 261 0700	2	Hexagon nut M5			
26	4147 141 0300	1	Air filter			
27	4147 140 4400	1	Air filter (B)			
28	4147 140 1000	1	Filter cover (1,2,3,4,5,6,7,8,9,10,11,12)	30		18.2012

(1) FS 360 C-E, (2) FS 360 C-E Z, (3) FS 360 C-EM, (4) FS 360 C-EM Z, (5) FS 410 C-E, (6) FS 410 C-E K, (7) FS 410 C-E KZ, (8) FS 410 C-E L, (9) FS 410 C-EM, (10) FS 410 C-EM K, (11) FS 410 C-EM KZ, (12) FS 410 C-EM L

## Spacer flange, Air filter

Reference	Item number	Qty	Description	Contains	Up to	Technical Information
29	4147 140 1001	1	Filter cover USA (2,4)	30 - 32		18.2012
30	9022 319 1027	2	Screw IS-M5x21			
31	4241 967 7200	1	Warning pictogram Filler cap USA (2,4)			18.2012
32	* 0000 967 7241	1	Warning pictogram Filler cap USA (2,4)		174501159	18.2012
33	4147 007 1602	1	Set of gaskets (B) (1,2,3,4,5,6,7,8,9,10,11,12)	2, 9, 22		
34	* 4147 007 1601	1	Set of gaskets (B) (1,2,5,6,7,8)	4, 9, 22		2.2014 14.2013



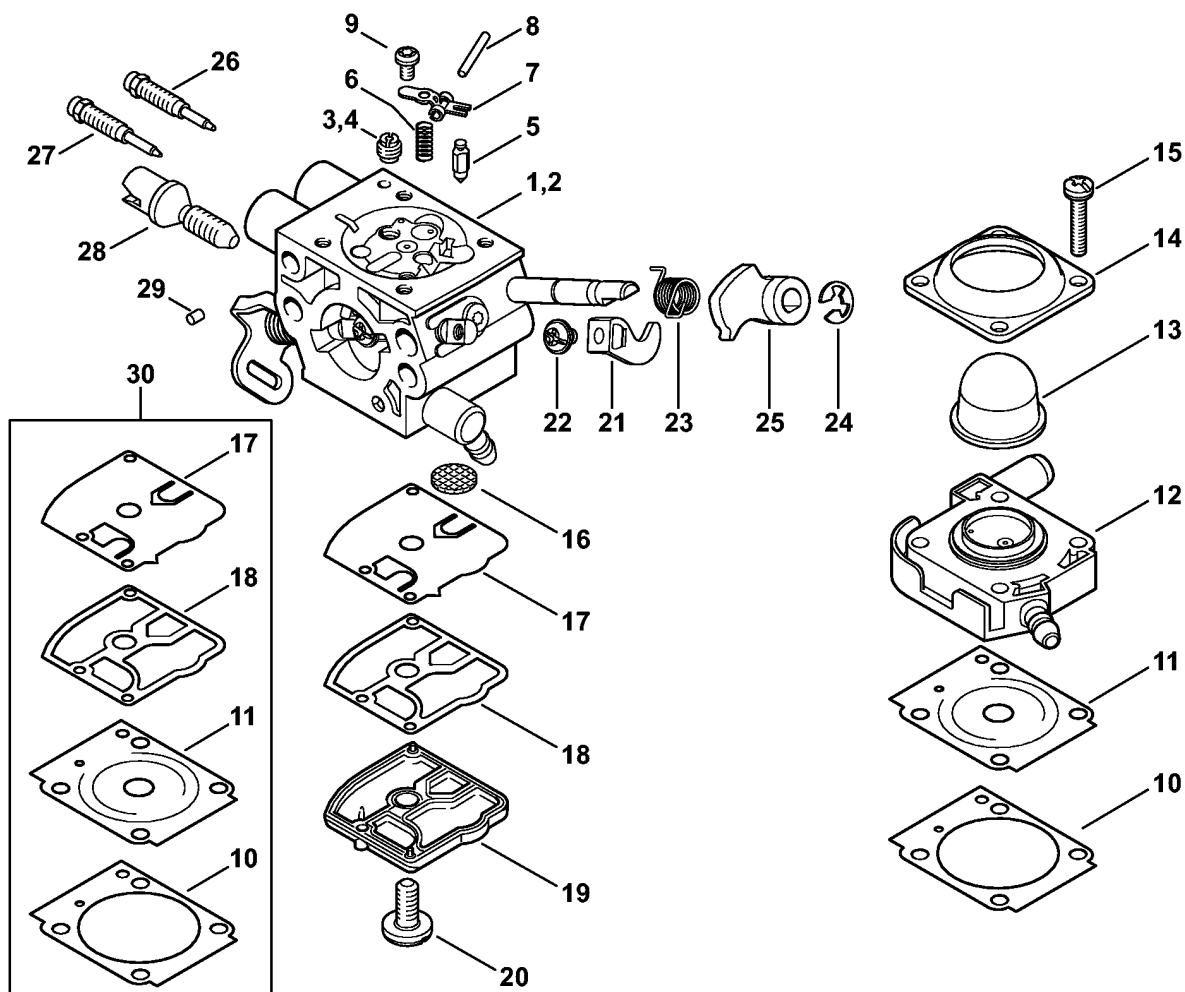


4147-GET-0025-A0

(1) FS 360 C-E, (2) FS 360 C-E Z, (3) FS 360 C-EM, (4) FS 360 C-EM Z, (5) FS 410 C-E, (6) FS 410 C-E K, (7) FS 410 C-E KZ, (8) FS 410 C-E L, (9) FS 410 C-EM, (10) FS 410 C-EM K, (11) FS 410 C-EM KZ, (12) FS 410 C-EM L

## Carburetor

Reference	Item number	Qty	Description	Contains
1	4147 120 0621	1	Carburetor (9,10,11,12)	3, 4, 6 - 27
2	4147 120 0622	1	Carburetor (3,4)	3, 5 - 27
3	4116 121 5100	1	Inlet needle (3,4,9,10,11,12)	
4	1128 122 3000	1	Spring (9,10,11,12)	
5	1145 122 3000	1	Spring (3,4)	
6	4229 121 5000	1	Inlet control lever (3,4,9,10,11,12)	
7	1120 121 9200	1	Spindle (3,4,9,10,11,12)	
8	0000 122 7101	1	Screw (3,4,9,10,11,12)	
9	4147 129 0906	1	Gasket (3,4,9,10,11,12)	
10	4147 121 4701	1	Metering diaphragm (3,4,9,10,11,12)	
11	4147 120 2202	1	Flange (3,4,9,10,11,12)	
12	4147 121 2702	1	Cap (3,4,9,10,11,12)	
13	4147 121 0800	1	End cover (3,4,9,10,11,12)	
14	4140 122 7100	4	Screw (3,4,9,10,11,12)	
15	1120 121 7800	1	Strainer (3,4,9,10,11,12)	
16	1129 121 4800	1	Pump diaphragm (3,4,9,10,11,12)	
17	1123 129 0905	1	Gasket (3,4,9,10,11,12)	
18	1139 120 0800	1	End cover (3,4,9,10,11,12)	
19	1120 122 7800	1	Oval head screw (3,4,9,10,11,12)	
20	4147 121 3501	1	Throttle lever (3,4,9,10,11,12)	
21	4132 122 6600	1	Collar screw (3,4,9,10,11,12)	
22	4147 122 3201	1	Torsion spring (3,4,9,10,11,12)	
23	4147 122 9001	1	E-clip (3,4,9,10,11,12)	
24	4147 121 6604	1	Lever (3,4,9,10,11,12)	
25	0000 120 5110	1	Solenoid valve (3,4,9,10,11,12)	
26	0000 121 2301	1	Support (3,4,9,10,11,12)	
27	0000 122 7103	1	Screw (3,4,9,10,11,12)	
28	4147 007 1701	1	Set of carburetor parts (3,4,9,10,11,12)	9, 10, 16, 17

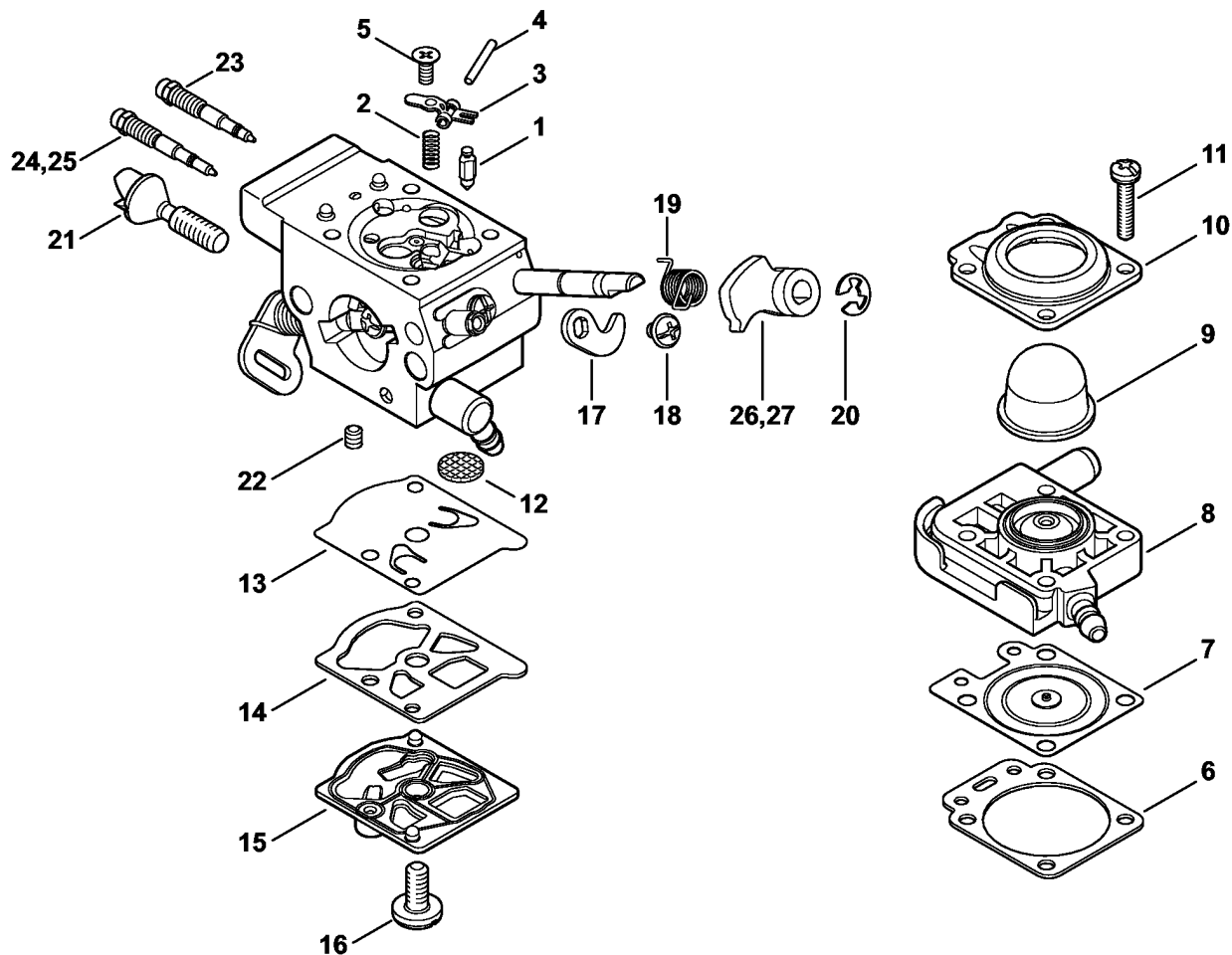


4147-GET-0030-A0

(1) FS 360 C-E, (2) FS 360 C-E Z, (3) FS 360 C-EM, (4) FS 360 C-EM Z, (5) FS 410 C-E, (6) FS 410 C-E K, (7) FS 410 C-E KZ, (8) FS 410 C-E L, (9) FS 410 C-EM, (10) FS 410 C-EM K, (11) FS 410 C-EM KZ, (12) FS 410 C-EM L

## Carburetor

Reference	Item number	Qty	Description	Contains
1	4147 120 0624	1	Carburetor (5,6,7,8)	3, 5 - 29
2	4147 120 0625	1	Carburetor (1,2)	4 - 29
3	1132 121 5640	1	Fixed jet 0.40 (5,6,7,8)	
4	4137 121 5601	1	Fixed jet 0.42 (1,2)	
5	4116 121 5100	1	Inlet needle (1,2,5,6,7,8)	
6	4128 122 3000	1	Spring (1,2,5,6,7,8)	
7	4229 121 5000	1	Inlet control lever (1,2,5,6,7,8)	
8	1120 121 9200	1	Spindle (1,2,5,6,7,8)	
9	0000 122 7101	1	Screw (1,2,5,6,7,8)	
10	4147 129 0907	1	Gasket (1,2,5,6,7,8)	
11	4147 121 4701	1	Metering diaphragm (1,2,5,6,7,8)	
12	4147 120 2202	1	Flange (1,2,5,6,7,8)	
13	4147 121 2702	1	Cap (1,2,5,6,7,8)	
14	4147 121 0800	1	End cover (1,2,5,6,7,8)	
15	4140 122 7100	4	Screw (1,2,5,6,7,8)	
16	1120 121 7800	1	Strainer (1,2,5,6,7,8)	
17	1129 121 4800	1	Pump diaphragm (1,2,5,6,7,8)	
18	1123 129 0905	1	Gasket (1,2,5,6,7,8)	
19	1139 120 0800	1	End cover (1,2,5,6,7,8)	
20	1120 122 7800	1	Oval head screw (1,2,5,6,7,8)	
21	4147 121 3501	1	Throttle lever (1,2,5,6,7,8)	
22	4132 122 6600	1	Collar screw (1,2,5,6,7,8)	
23	4147 122 3201	1	Torsion spring (1,2,5,6,7,8)	
24	4147 122 9001	1	E-clip (1,2,5,6,7,8)	
25	4147 121 6605	1	Lever (1,2,5,6,7,8)	
26	4147 122 6702	1	High speed screw (1,2,5,6,7,8)	
27	4147 122 6802	1	Low speed screw (1,2,5,6,7,8)	
28	1139 122 6200	1	Idle speed screw (1,2,5,6,7,8)	
29	1125 122 4200	1	Clamp (1,2,5,6,7,8)	
30	4147 007 1702	1	Set of carburetor parts (1,2,5,6,7,8)	10, 11, 17, 18

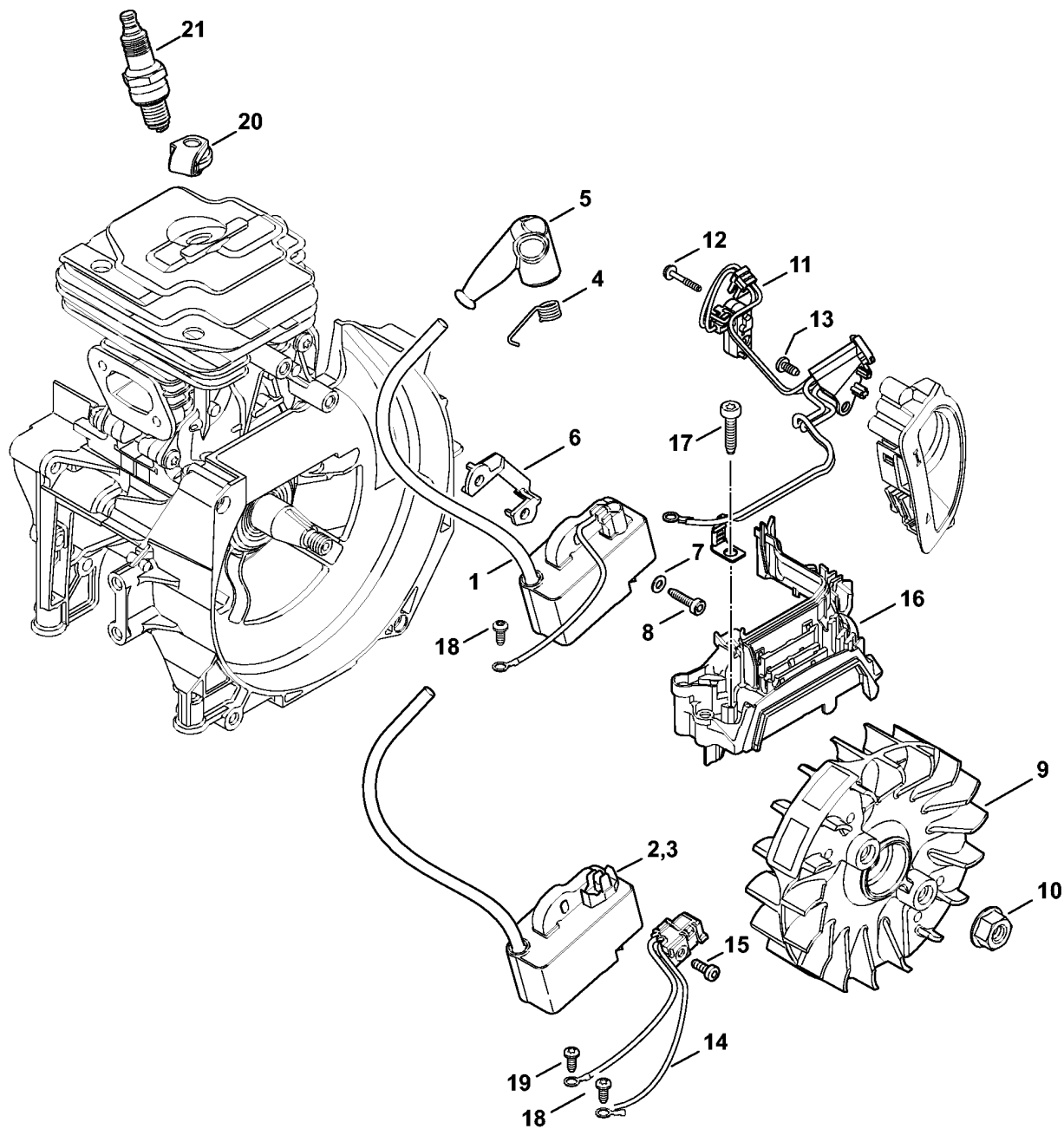


6904ET004-SC

(1) FS 360 C-E, (2) FS 360 C-E Z, (3) FS 360 C-EM, (4) FS 360 C-EM Z, (5) FS 410 C-E, (6) FS 410 C-E K, (7) FS 410 C-E KZ, (8) FS 410 C-E L, (9) FS 410 C-EM, (10) FS 410 C-EM K, (11) FS 410 C-EM KZ, (12) FS 410 C-EM L

## Carburetor WTF-10, WTF-11, WTF-5, WTF-6

Reference	Item number	Qty	Description	Contains	Technical Information
	4147 120 0605	1	Carburetor WTF-10A (C) (1,2)	1 - 24, 26	
	4147 120 0607	1	Carburetor WTF-11A (C) (5,6,7,8)	1 - 23, 25, 26	
	* 4147 120 0600	1	Carburetor WTF-5A (1,2)	1 - 24, 27	2.2014
	* 4147 120 0601	1	Carburetor WTF-6A (5,6,7,8)	1 - 23, 25, 27	14.2013
1	4116 121 5100	1	Inlet needle (1,2,5,6,7,8)		
2	4147 122 3000	1	Spring (1,2,5,6,7,8)		
3	1121 121 5000	1	Inlet control lever (1,2,5,6,7,8)		
4	1113 121 9200	1	Spindle (1,2,5,6,7,8)		
5	1121 122 7103	1	Round head screw (1,2,5,6,7,8)		
6	4133 129 0901	1	Gasket (1,2,5,6,7,8)		
7	4147 121 4700	1	Metering diaphragm (1,2,5,6,7,8)		
8	4147 120 2201	1	Flange (1,2,5,6,7,8)		
9	4133 121 2700	1	Cap (1,2,5,6,7,8)		
10	4133 121 0801	1	End cover (1,2,5,6,7,8)		
11	4147 122 7100	4	Screw (1,2,5,6,7,8)		
12	1114 121 7800	1	Strainer (1,2,5,6,7,8)		
13	1121 121 4801	1	Pump diaphragm (1,2,5,6,7,8)		
14	4147 129 0904	1	Gasket (1,2,5,6,7,8)		
15	1143 120 2600	1	Pump cover (1,2,5,6,7,8)		
16	1114 122 7100	1	Screw (1,2,5,6,7,8)		
17	4147 121 3500	1	Throttle lever (1,2,5,6,7,8)		
18	1121 122 7102	1	Round head screw (1,2,5,6,7,8)		
19	4147 122 3200	1	Torsion spring (1,2,5,6,7,8)		
20	1117 122 9000	1	E-clip (1,2,5,6,7,8)		
21	4147 122 6200	1	Idle speed screw (1,2,5,6,7,8)		
22	1122 121 7700	1	Clamp (1,2,5,6,7,8)		
23	4147 122 6700	1	High speed screw (1,2,5,6,7,8)		
24	4147 122 6800	1	Low speed screw (1,2)		
25	4147 122 6801	1	Low speed screw (5,6,7,8)		
26	4147 121 6602	1	Lever (1,2,5,6,7,8)		
27	* 4147 121 6600	1	Lever (1,2,5,6,7,8)		2.2014 14.2013
	4147 007 1700	1	Set of carburetor parts	6, 7, 13, 14	



4147-GET-0042-A0

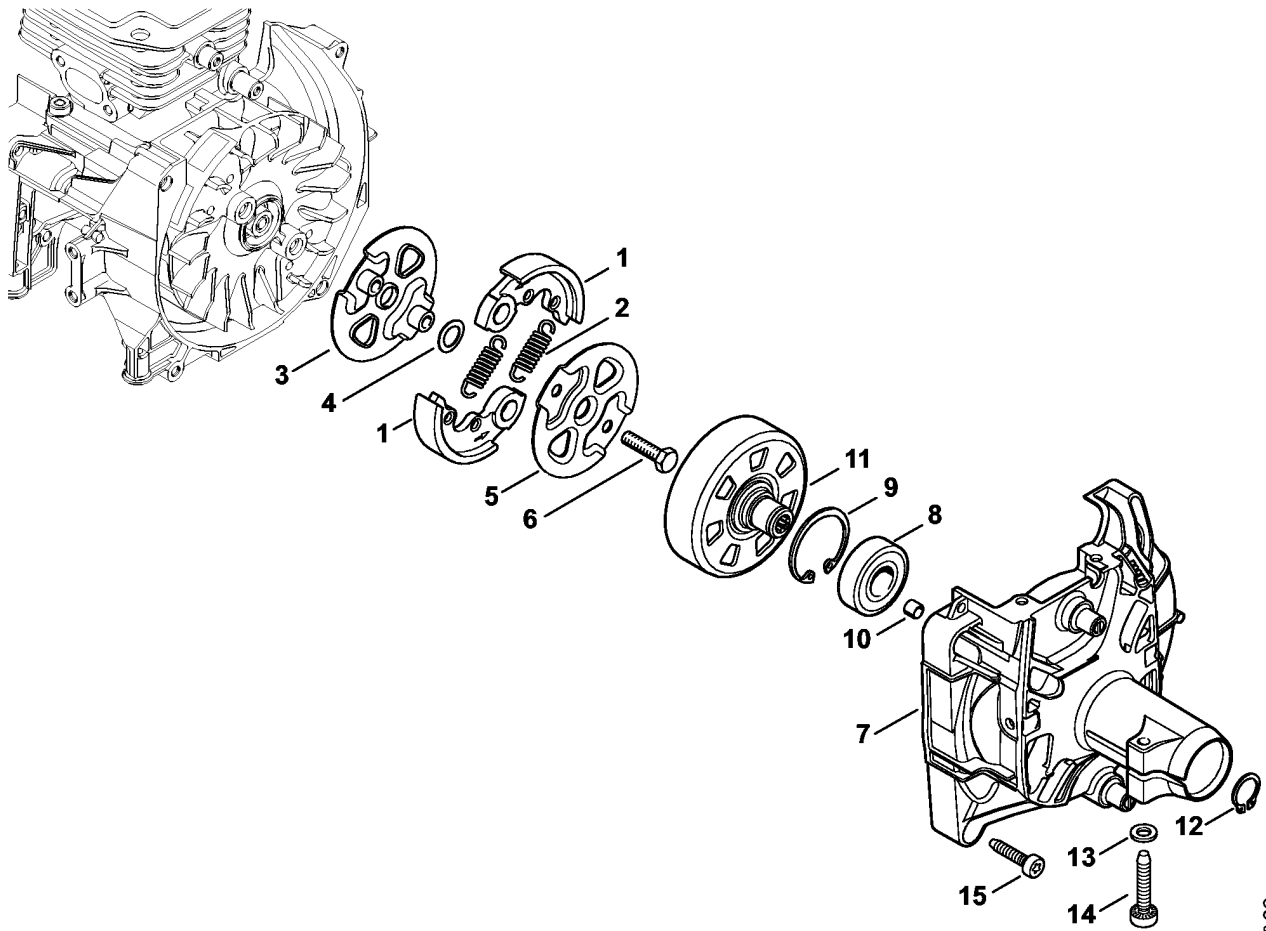
(1) FS 360 C-E, (2) FS 360 C-E Z, (3) FS 360 C-EM, (4) FS 360 C-EM Z, (5) FS 410 C-E, (6) FS 410 C-E K, (7) FS 410 C-E KZ, (8) FS 410 C-E L, (9) FS 410 C-EM, (10) FS 410 C-EM K, (11) FS 410 C-EM KZ, (12) FS 410 C-EM L

## Ignition system

Reference	Item number	Qty	Description	Contains	Up to	Technical Information
1	4147 400 1313	1	Ignition module (1,2,5,6,7,8)	5, 6		
2	4147 400 4716	1	Control unit (3,4)	5, 6		
3	4147 400 4715	1	Control unit (9,10,11,12)	5, 6		
4	0000 998 0604	1	Spark plug contact spring			
5	0000 405 1005	1	Spark plug boot			
6	* 4241 405 8000	1	Insulator (1,2,5,6,7,8)		178262347	2.2014 14.2013
7	9291 021 0100	2	Washer 4.3			
8	9075 478 3019	2	Pan head self-tapping screw IS-D4x18			
9	4147 400 1200	1	Flywheel			25.2005
10	0000 955 0802	1	Collar nut M8x1			
11	4147 430 1003	1	Trigger unit (3,4,9,10,11,12)			
12	9076 478 0210	1	Pan head self-tapping screw A2.5x16 (3,4,9,10,11,12)			
13	9074 478 2970	1	Pan head self-tapping screw IS-P4x10 (3,4,9,10,11,12)			
14	4147 440 3003	1	Wiring harness (3,4,9,10,11,12)	15		
15	9022 319 0340	1	Screw IS-M3x8 (3,4,9,10,11,12)			
16	4147 448 1205	1	Lead retainer			
17	9075 478 4159	2	Pan head self-tapping screw IS-D5x24			
18	9074 478 2970	1	Pan head self-tapping screw IS-P4x10			
19	9074 478 2970	1	Pan head self-tapping screw IS-P4x10 (3,4,9,10,11,12)			
20	4147 448 1202	1	Lead retainer			
21	0000 400 7011	1	Spark plug NGK CMR6H			



**Clutch, Clutch housing**

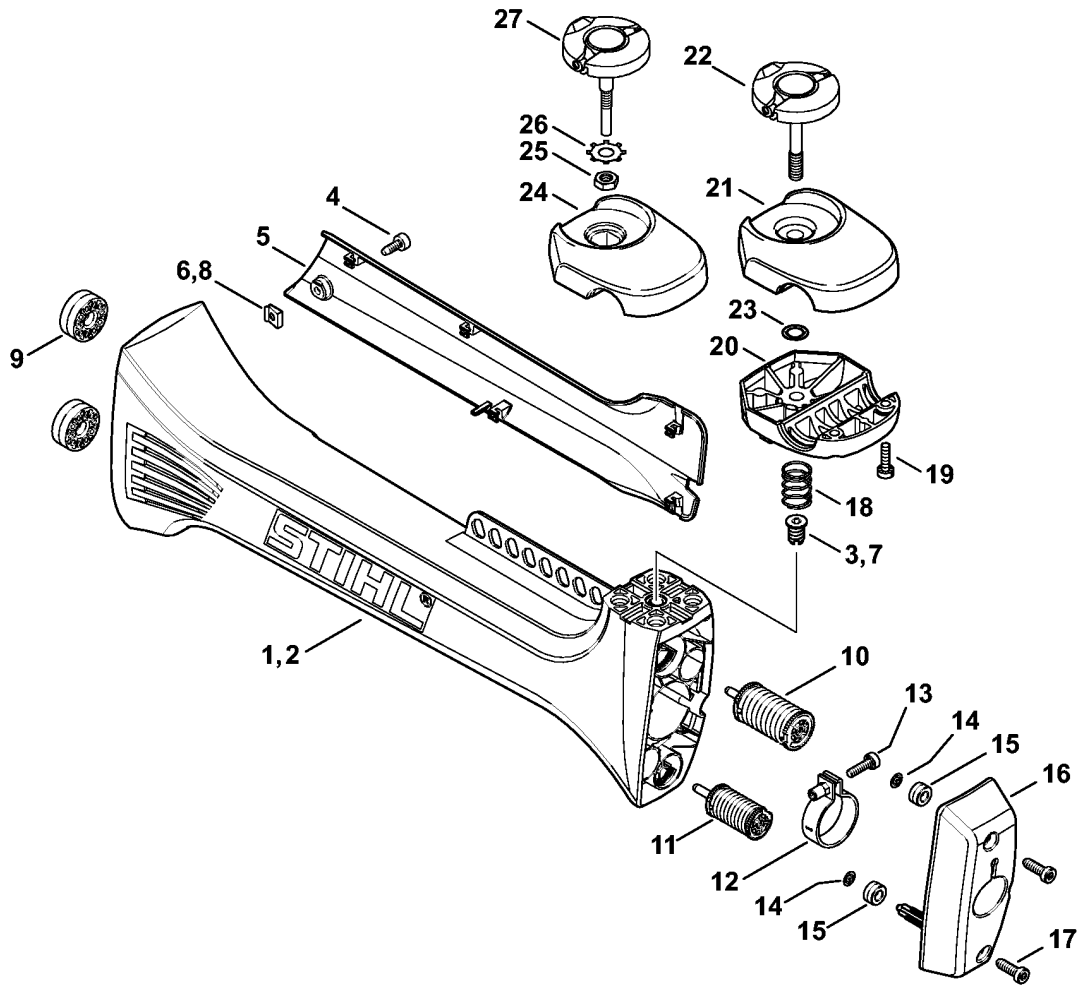


5905ET018 SC

(1) FS 360 C-E, (2) FS 360 C-E Z, (3) FS 360 C-EM, (4) FS 360 C-EM Z, (5) FS 410 C-E, (6) FS 410 C-E K, (7) FS 410 C-E KZ, (8) FS 410 C-E L, (9) FS 410 C-EM, (10) FS 410 C-EM K, (11) FS 410 C-EM KZ, (12) FS 410 C-EM L

## Clutch, Clutch housing

Reference	Item number	Qty	Description	Contains
	4147 160 2002	1	Clutch	1 - 6
1	4147 160 2000	1	Clutch	2
2	0000 997 5519	2	Tension spring	
3	4147 160 3000	1	Cover washer	
4	0000 958 1000	2	Washer 16x10x0.5	
5	4128 162 1000	1	Cover washer	
6	0000 951 0600	2	Hexagon head screw M6	
7	4147 160 0615	1	Clutch housing	8 - 10
8	9503 003 7452	1	Grooved ball bearing 6202-2RS	
9	9456 621 3860	1	Circlip 35x1.5	
10	0000 988 8600	2	Sleeve	
11	4147 160 2902	1	Clutch drum	
12	9455 621 1520	1	Circlip 15x1	
13	9291 021 0140	1	Washer 6.4	
14	9075 478 4720	1	Pan head self-tapping screw IS-D6x35	
15	9075 478 4159	4	Pan head self-tapping screw IS-D5x24	



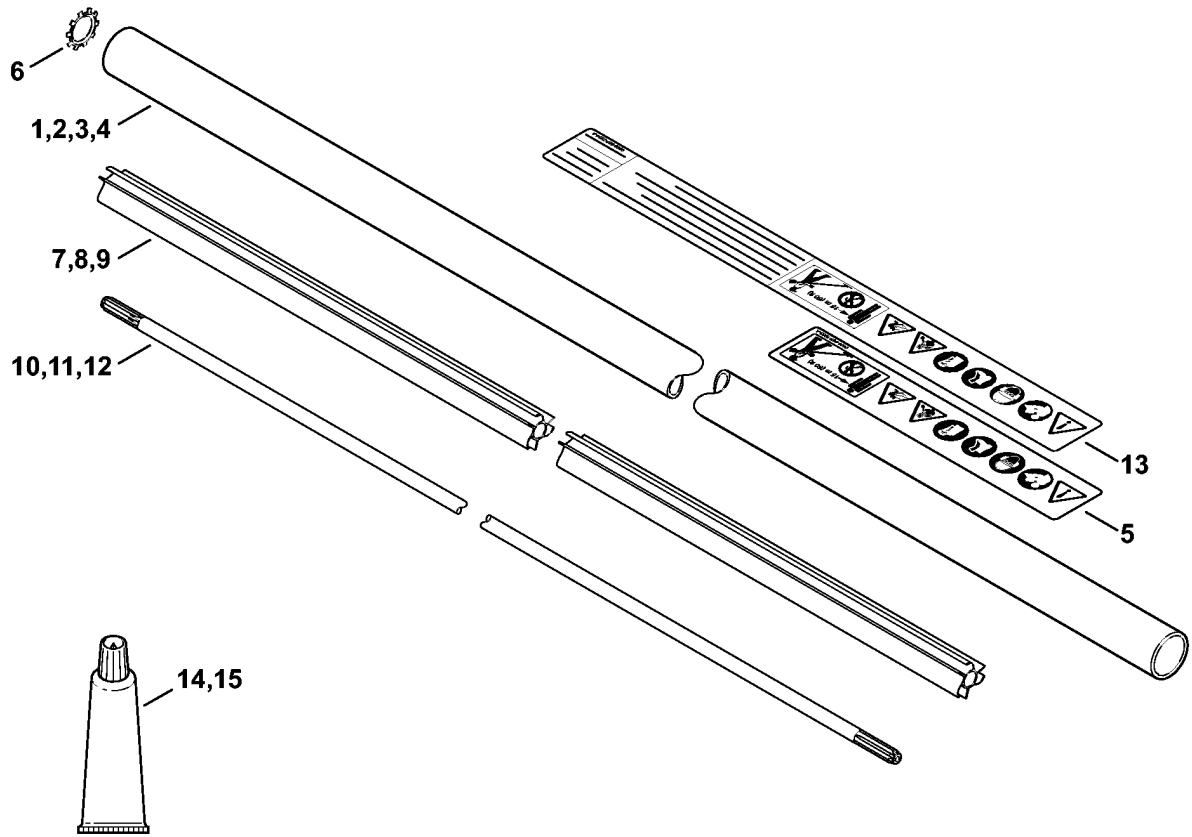
4147-GET-0026-A0

(1) FS 360 C-E, (2) FS 360 C-E Z, (3) FS 360 C-EM, (4) FS 360 C-EM Z, (5) FS 410 C-E, (6) FS 410 C-E K, (7) FS 410 C-E KZ, (8) FS 410 C-E L, (9) FS 410 C-EM, (10) FS 410 C-EM K, (11) FS 410 C-EM KZ, (12) FS 410 C-EM L

## AV system

Reference	Item number	Qty	Description	Contains	Technical Information
1	4147 790 0906	1	AV housing	4 - 7	
2	* 4147 790 0903	1	AV housing	3 - 6	6.2016
3	* 9799 003 0410	1	Threaded insert M6x15.4		6.2016
4	9074 478 4125	1	Pan head self-tapping screw IS-5x14		
5	4147 791 4300	1	Guard		
6	9286 620 9821	1	Flat nut 4.8x3		
7	9799 003 0500	1	Helicoil thread insert M8x16.4		
8	* 9286 620 9810	1	Flat nut 4.2		
9	4147 792 9301	2	Rubber buffer		
10	4147 790 8301	1	AV-Spring		
11	4147 790 8300	1	AV-Spring		
12	4128 710 6700	1	Hose clamp	13	
13	9022 341 1010	1	Spline screw IS-M5x18		
14	9417 003 7512	2	Push nut 4.0x9.6x1.8		
15	4147 791 2801	2	Annular buffer		
16	4147 791 7600	1	Support		
17	9074 478 4425	2	Pan head self-tapping screw IS-P6x19		
18	0000 997 1701	1	Compression spring		
19	9022 341 0980	2	Spline screw IS-M5x16		
20	4147 791 0901	1	Clamp		
21	4147 791 0904	1	Clamp		
22	4147 790 7503	1	Tommy screw		
23	9646 945 0490	1	O-ring 7x1.5		
24	* 4147 790 4800	1	Clamp	25, 26	6.2016
25	* 9211 260 1150	1	Hexagon nut M8x1 l/h thread		6.2016
26	* 9451 621 2925	1	Shakeproof washer 24x0.5		6.2016
27	* 4147 790 7501	1	Tommy screw		6.2016

**Drive tube assembly**

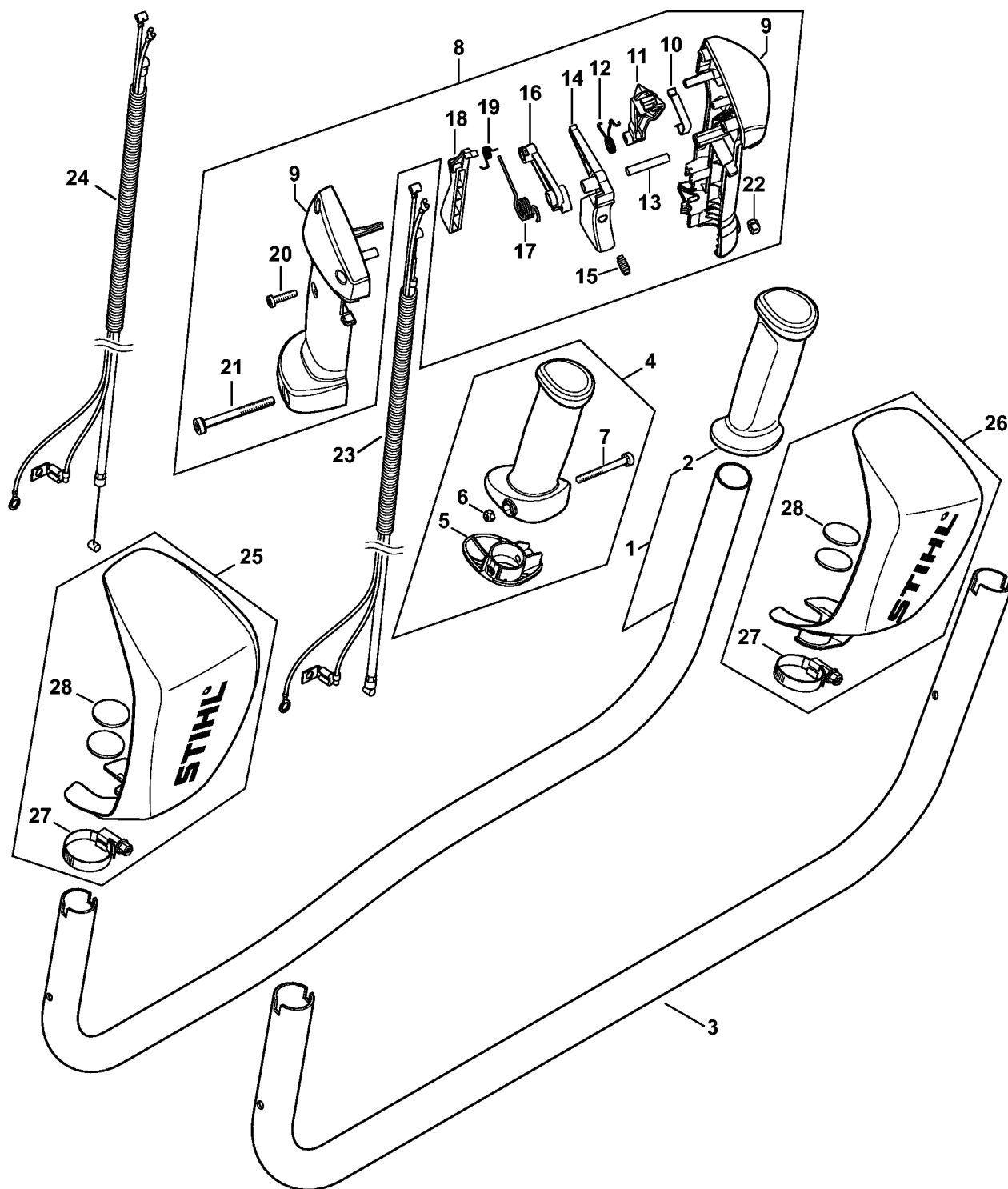


5905ET026 SC

(1) FS 360 C-E, (2) FS 360 C-E Z, (3) FS 360 C-EM, (4) FS 360 C-EM Z, (5) FS 410 C-E, (6) FS 410 C-E K, (7) FS 410 C-E KZ, (8) FS 410 C-E L, (9) FS 410 C-EM, (10) FS 410 C-EM K, (11) FS 410 C-EM KZ, (12) FS 410 C-EM L

## Drive tube assembly

Reference	Item number	Qty	Description	Contains
1	4147 710 7106	1	Drive tube assembly Ø 28 mm x 1.36 m / 1 1/8 x 53 9/16" (6,7,10,11)	5 - 7
2	4147 710 7105	1	Drive tube assembly Ø 28 mm / 1 1/8" (1,2,3,4,5,9)	5, 6, 8
3	4147 710 7108	1	Drive tube assembly Ø 28 mm / 1 1/8" USA (2,4)	6, 8, 13
4	4147 710 7107	1	Drive tube assembly Ø 28 mm x 1.53 m / 1 1/8" x 60 1/4" (8,12)	5, 6, 9
5	0000 967 7253	1	Warning pictogram FS (1,2,3,4,5,6,7,8,9,10,11,12)	
6	9451 621 2933	1	Shakeproof washer 24x0.5	
7		1	Flexible liner 1235 mm / 48 5/8" (D) (6,7,10,11)	
8		1	Flexible liner 1360 mm / 53 1/2" (D) (8,12)	
9		1	Flexible liner 1420 mm / 55 7/8" (D) (8,12)	
	4128 711 7301	1	Flexible liner 1425 mm / 56 1/8" (A,B)	
10	4148 711 3204	1	Drive shaft 1.408 m (6,7,10,11)	
11	4147 711 3205	1	Drive shaft 1.523 m (1,2,3,4,5,9)	
12	4147 711 3206	1	Drive shaft 1.583 m / 62 3/8" (8,12)	
13	0000 967 7254	1	Warning pictogram FS USA (2,4)	
14	0781 120 1109	1	Multipurpose grease 80 g (B)	
15	0781 120 1110	1	Multipurpose grease 225 g (B)	



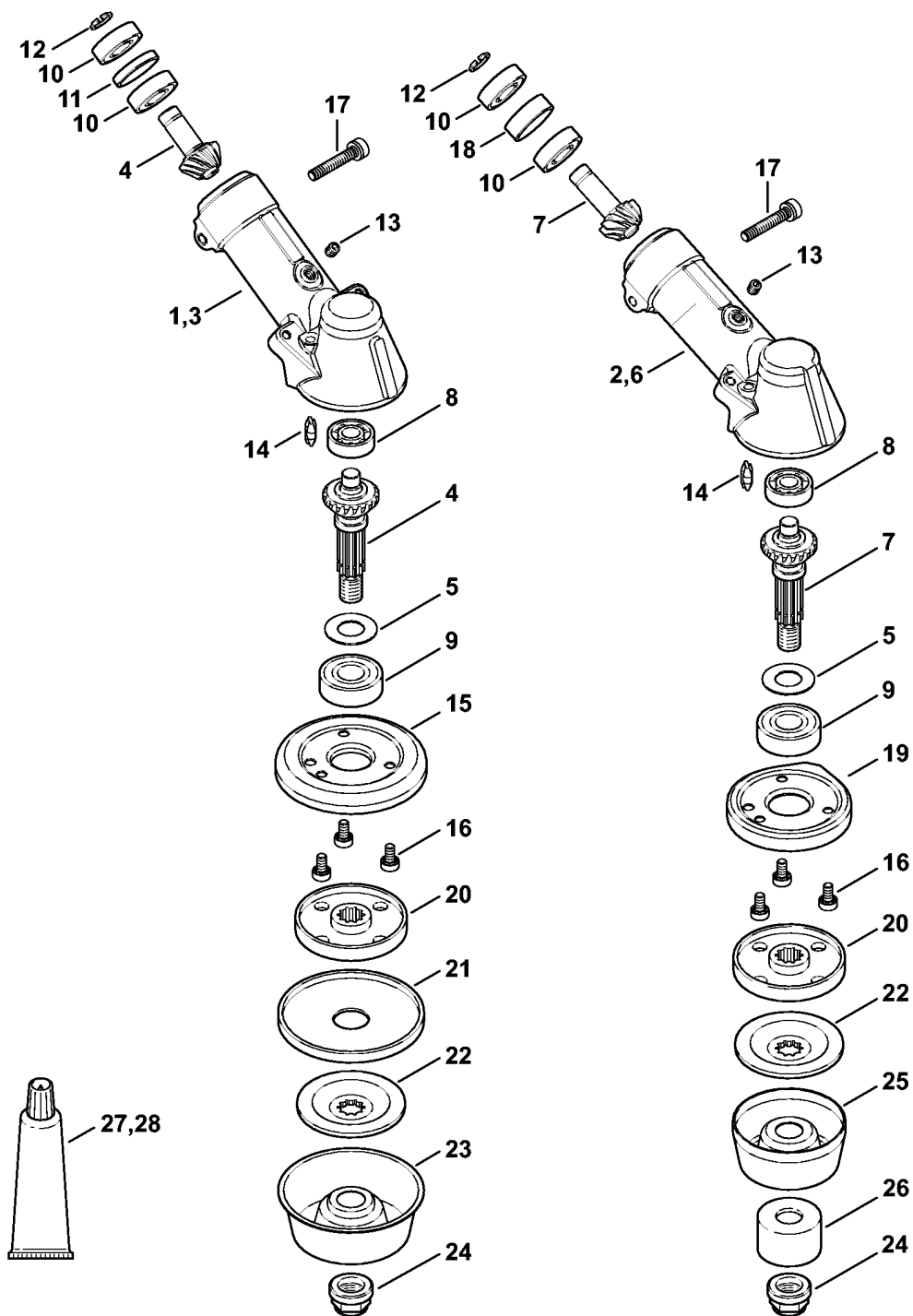
4147-SET-0049-A0

(1) FS 360 C-E, (2) FS 360 C-E Z, (3) FS 360 C-EM, (4) FS 360 C-EM Z, (5) FS 410 C-E, (6) FS 410 C-E K, (7) FS 410 C-E KZ, (8) FS 410 C-E L, (9) FS 410 C-EM, (10) FS 410 C-EM K, (11) FS 410 C-EM KZ, (12) FS 410 C-EM L

## Bike handle

Reference	Item number	Qty	Description	Contains	Technical Information
23	4147 180 1112	1	Throttle cable		
1	4147 790 1702	1	Handlebar (1,2,3,4,5,8,9,12)	2	2.2014 14.2013
2	4147 791 0301	1	Handle (1,2,3,4,5,8,9,12)		2.2014 14.2013
3	4147 791 1700	1	Handlebar (6,7,10,11)		
4	4147 790 0300	1	Handle (6,7,10,11)	5 - 7	
4	* 4147 790 0300	1	Handle (1,2,3,4,5,8,9,12)	5 - 7	2.2014 14.2013
5	4147 791 7500	1	Cover		
6	9214 320 0700	1	Lock nut M5		
7	9022 341 1220	1	Spline screw IS-M5x48		
8	4148 790 1306	1	Control handle	9 - 22	77.2017
9	4148 790 0303	1	Handle		77.2017
10	4147 442 1600	1	Contact spring		
11	4147 182 2801	1	Lever		
12	4147 182 4502	1	Torsion spring		
13	9371 470 2683	1	Cylindrical pin 5x28		
14	4144 180 1501	1	Throttle trigger	15	
15	0000 953 0808	1	Stud		
16	4144 182 2801	1	Lever		
17	4144 182 4500	1	Torsion spring		
18	4144 182 0800	1	Lockout lever		
19	4128 182 4501	1	Torsion spring		
20	9074 478 3025	3	Pan head self-tapping screw IS-P4x16		
21	9022 341 1220	1	Spline screw IS-M5x48		
22	9214 320 0700	1	Lock nut M5		
24	4147 180 1100	1	Throttle cable		77.2017
	4147 790 9102	1	Hand guard (B) (1,2,3,4,5,8,9,12)	25 - 28	
25	4147 790 9100	1	Hand guard (B) (1,2,3,4,5,8,9,12)	27, 28	
26	4147 790 9101	1	Hand guard (B) (1,2,3,4,5,8,9,12)	27, 28	
27	9771 021 2245	2	Hose clip (B) (1,2,3,4,5,8,9,12)		
28		2	Cling strip fastener (B,D) (1,2,3,4,5,8,9,12)		
	4147 790 5001	1	Cling strip fastener (B) 10 pieces (1,2,3,4,5,8,9,12)	28	

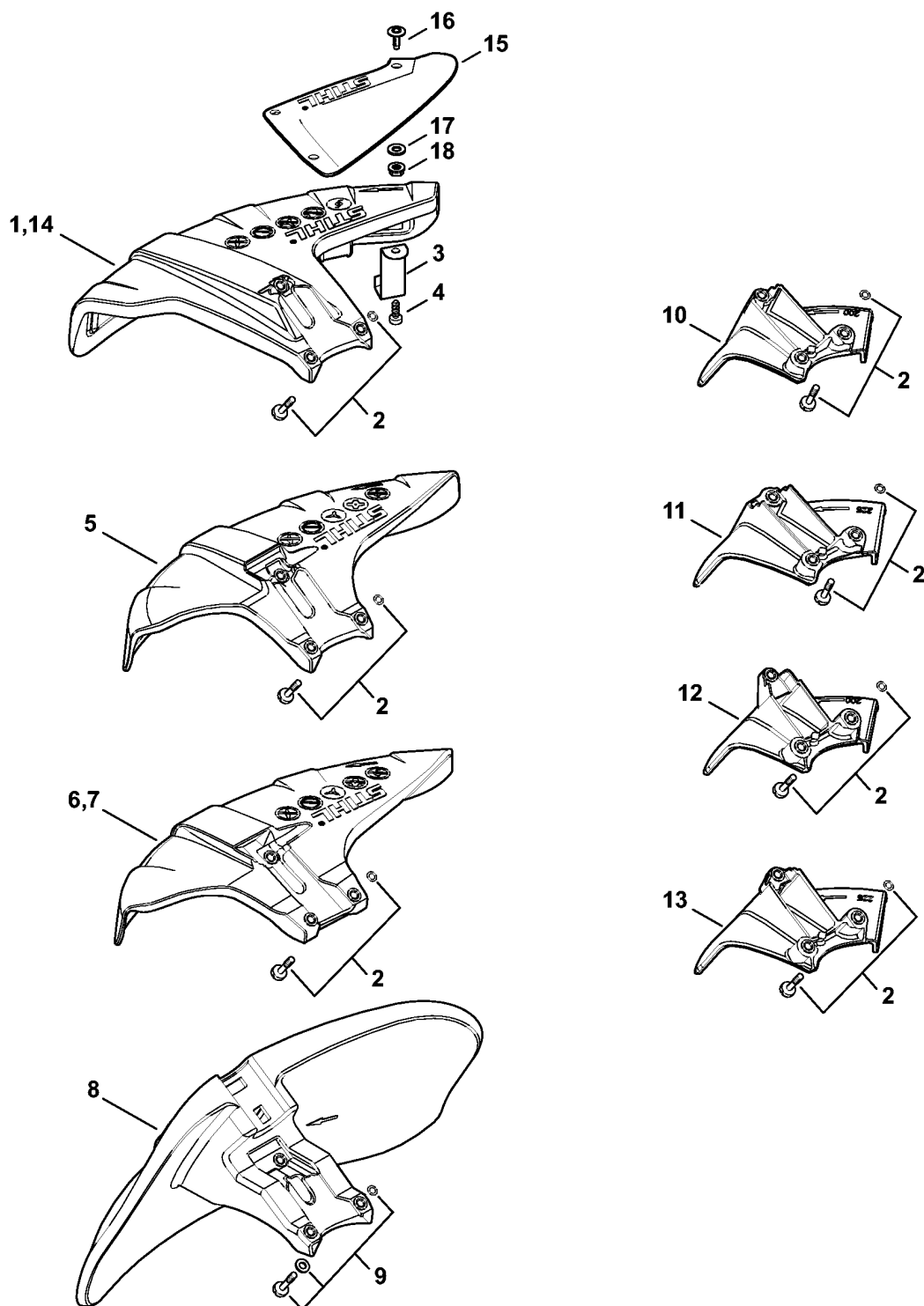




(1) FS 360 C-E, (2) FS 360 C-E Z, (3) FS 360 C-EM, (4) FS 360 C-EM Z, (5) FS 410 C-E, (6) FS 410 C-E K, (7) FS 410 C-E KZ, (8) FS 410 C-E L, (9) FS 410 C-EM, (10) FS 410 C-EM K, (11) FS 410 C-EM KZ, (12) FS 410 C-EM L

## Gear head

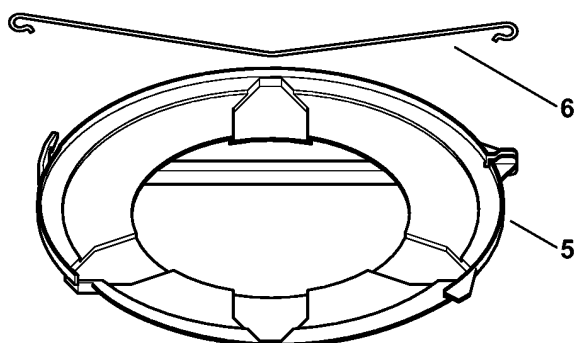
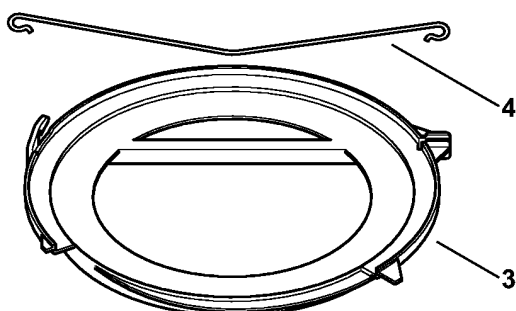
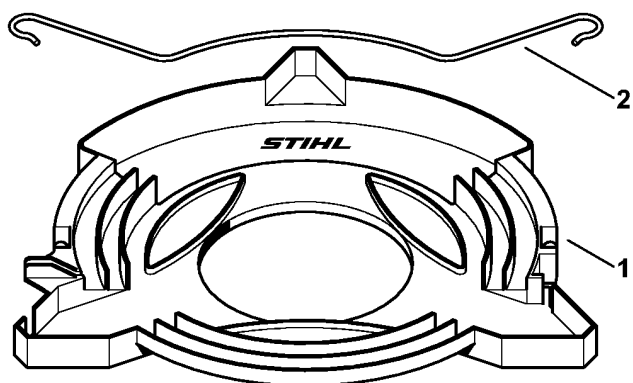
Reference	Item number	Qty	Description	Contains
1	4147 640 0104	1	Gearhead (1,2,3,4,5,8,9,12)	3 - 5, 8 - 17
2	4147 640 0112	1	Gearhead (6,7,10,11)	5 - 10, 12 - 14, 16 - 19
3	4147 641 0300	1	Gear housing (1,2,3,4,5,8,9,12)	
4	4147 640 7302	1	Set of pinions (1,2,3,4,5,8,9,12)	5
5	4147 642 9500	1	Slinger disc	
6	4147 641 0310	1	Gear housing (6,7,10,11)	
7	4147 640 7303	1	Set of pinions (6,7,10,11)	5
8	9503 003 0103	1	Grooved ball bearing 6000	
9	9503 003 7454	1	Grooved ball bearing DIN625-6202-2RS	
10	9503 003 5160	2	Grooved ball bearing 6001-2Z	
11	4147 642 8501	1	Spacer sleeve (1,2,3,4,5,8,9,12)	
12	9455 021 1131	1	Circlip 12x1	
13	0000 953 1001	1	Stud M6	
14	4147 641 0800	1	Retaining plug	
15	4128 717 2704	1	Guard ring (1,2,3,4,5,8,9,12)	
16	9022 399 0950	3	Spline screw IS-M5x10	
17	0000 790 6105	1	Screw assy. M6	
18	4147 642 8511	1	Spacer sleeve (6,7,10,11)	
19	4147 717 2701	1	Guard ring (6,7,10,11)	
20	4147 710 3800	1	Thrust plate	
21	4119 717 2800	1	Guard washer (1,2,3,4,5,8,9,12)	
22	4128 713 1600	1	Thrust washer	
23	4119 713 3100	1	Rider plate (1,2,3,4,5,8,9,12)	
24	4119 642 7600	1	Collar nut M12x1.5 l/h thread	
25	4116 713 3100	1	Rider plate (6,7,10,11)	
26	4116 717 2702	1	Guard ring (B) (6,7,10,11)	
27	0781 120 1117	1	Gear lubricant 80 g (B)	
28	0781 120 1118	1	Gear lubricant 225 g (B)	



(1) FS 360 C-E, (2) FS 360 C-E Z, (3) FS 360 C-EM, (4) FS 360 C-EM Z, (5) FS 410 C-E, (6) FS 410 C-E K, (7) FS 410 C-E KZ, (8) FS 410 C-E L, (9) FS 410 C-EM, (10) FS 410 C-EM K, (11) FS 410 C-EM KZ, (12) FS 410 C-EM L

## Deflector

Reference	Item number	Qty	Description	Contains	Technical Information
1	4147 710 8100	1	Deflector (1,2,3,4,5,8,9,12)	3, 4	
2	0000 007 1044	1	Screw kit 10 pieces		
3	4133 713 4110	1	Blade (1,2,3,4,5,8,9,12)		
4	9074 478 4405	1	Pan head self-tapping screw IS-P6x14 (1,2,3,4,5,8,9,12)		
5	4147 710 8101	1	Deflector (1,2,5,8)		
6	4147 007 1017	1	Deflector kit (B) (6,7)	7	
7	4147 710 8106	1	Deflector (B) (6,7)		
8	4147 710 8102	1	Deflector (1,2,5,8)		
9	0000 007 1043	1	Screw kit 10 pieces (1,2,3,4,5,8,9,12)		
10	4147 710 8210	1	Limit stop Ø 200 mm (6,7,10,11)		
11	4147 710 8211	1	Limit stop Ø 225 mm (6,7,10,11)		
12	4147 710 8200	1	Limit stop Ø 200 mm (1,2,3,4,5,8,9,12)		
13	4147 710 8201	1	Limit stop Ø 225 mm (1,2,3,4,5,8,9,12)		
14	4147 710 8108	1	Deflector (B) GB (1,2,3,4,5,8,9,12)	1, 3, 4, 15 - 18	
15	4147 710 8107	1	Deflector (B) (1,2,3,4,5,8,9,12)	16 - 18	8.2013
16	0000 951 1112	4	Screw IS-M5x12 (B) (1,2,3,4,5,8,9,12)		
17	9309 021 0110	4	Washer 5.3 (B) (1,2,3,4,5,8,9,12)		
18	9216 263 0700	4	Hexagon nut M5 (B) (1,2,3,4,5,8,9,12)		

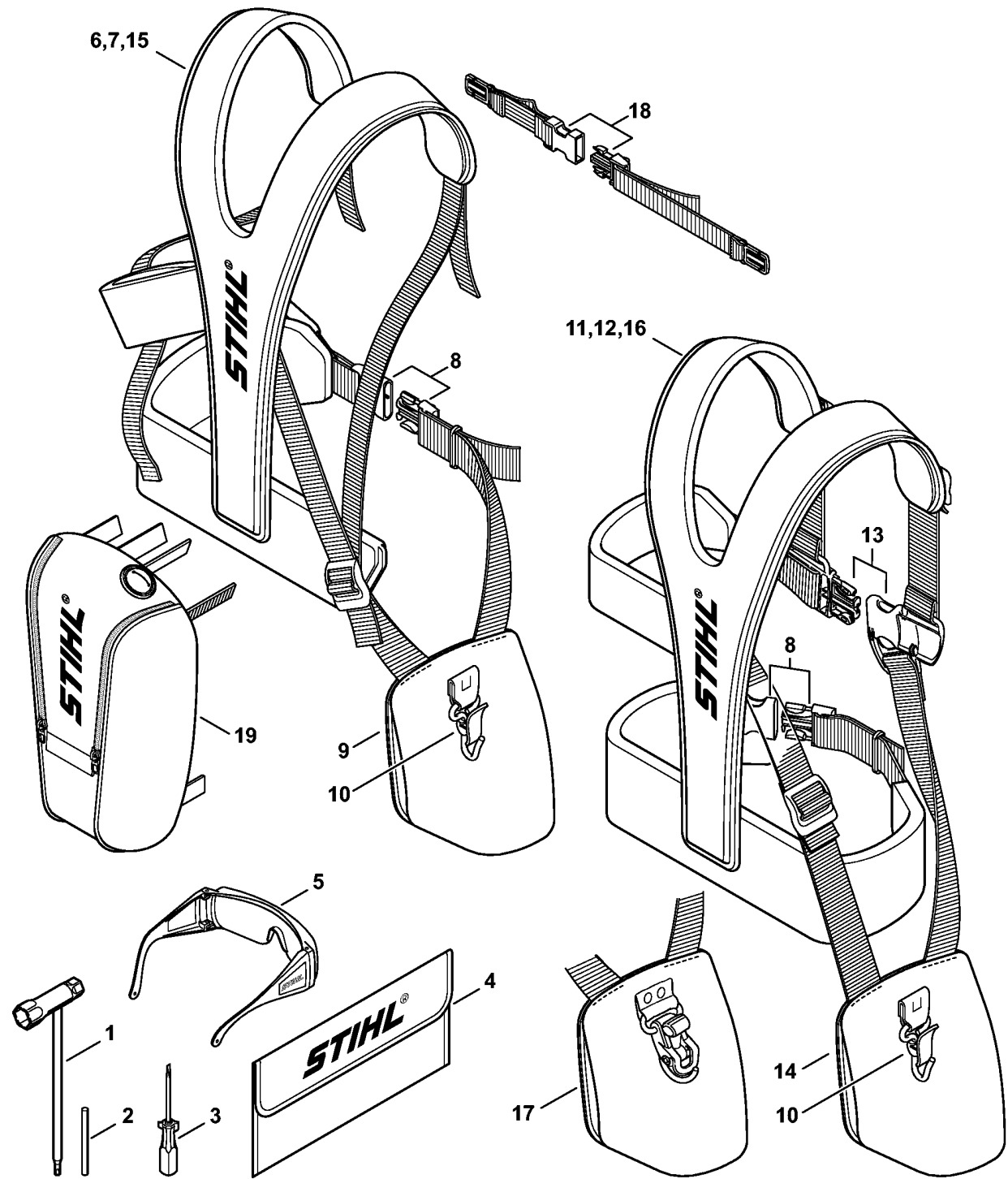


392ET101 SC

(1) FS 360 C-E, (2) FS 360 C-E Z, (3) FS 360 C-EM, (4) FS 360 C-EM Z, (5) FS 410 C-E, (6) FS 410 C-E K, (7) FS 410 C-E KZ, (8) FS 410 C-E L, (9) FS 410 C-EM, (10) FS 410 C-EM K, (11) FS 410 C-EM KZ, (12) FS 410 C-EM L

**Transport guard**

Reference	Item number	Qty	Description	Contains
1	4116 790 3901	1	Transport guard Ø 350	2
2	4116 792 4300	1	Clamping wire	
3	4119 790 3901	1	Transport guard Ø 225	4
4	4119 792 4300	1	Clamping wire	
5	4119 790 3906	1	Transport guard Ø 260	6
6	4119 792 4305	1	Clamping wire	



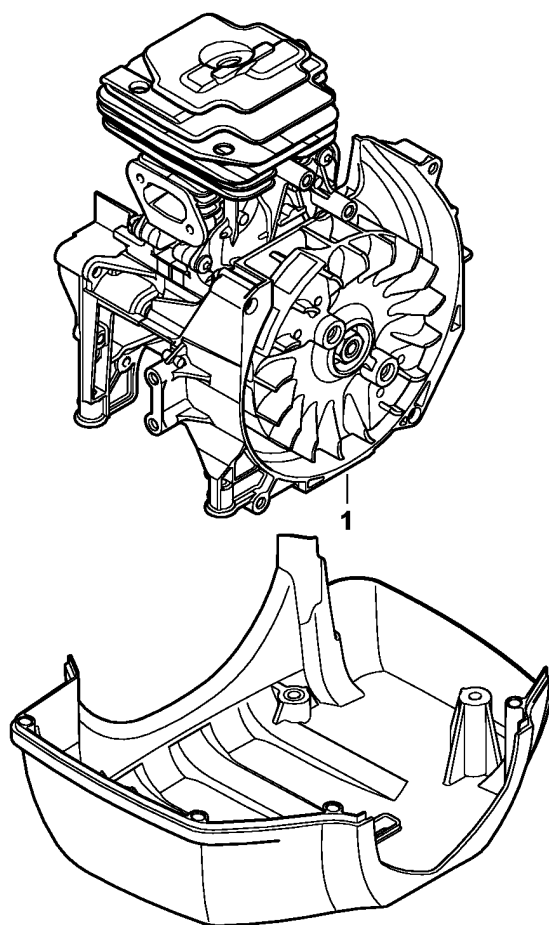
4147-GET-0046-A0

(1) FS 360 C-E, (2) FS 360 C-E Z, (3) FS 360 C-EM, (4) FS 360 C-EM Z, (5) FS 410 C-E, (6) FS 410 C-E K, (7) FS 410 C-E KZ, (8) FS 410 C-E L, (9) FS 410 C-EM, (10) FS 410 C-EM K, (11) FS 410 C-EM KZ, (12) FS 410 C-EM L

## Tools, Full harness

Reference	Item number	Qty	Description	Contains
1	4180 890 3400	1	Combination wrench	
2	4130 893 7800	1	Locking pin	
3	0000 890 2300	1	Screwdriver	
4	0000 891 0810	1	Tool roll (B)	
5	0000 884 0307	1	Safety glasses	
6	4147 710 9002	1	Universal harness ADVANCE (1,2,3,4,5,8,9,12)	8 - 10
7	4147 710 9004	1	Universal harness ADVANCE XXL (B) (1,2,3,4,5,8,9,12)	8 - 10
8	4134 710 6401	1	Buckle (1,2,3,4,5,8,9,12)	
9	4147 740 2500	1	Hip pad (1,2,3,4,5,8,9,12)	10
10	4147 710 6900	1	Spring safety hook	
11	4147 710 9003	1	Forestry harness ADVANCE (6,7,10,11)	8, 10, 13, 14
12	4147 710 9009	1	Forestry harness ADVANCE XXL (B) (6,7,10,11)	8, 10, 13, 14
13	4147 710 6402	1	Buckle with strap (6,7,10,11)	
14	4147 740 2501	1	Hip pad (6,7,10,11)	10
15	4147 710 9014	1	Universal harness ADVANCE PLUS (1,2,3,4,5,8,9,12)	8, 17
16	4147 710 9015	1	Forestry harness ADVANCE PLUS (6,7,10,11)	8, 13, 17
17	4147 740 2502	1	Hip pad	
18	0000 790 7700	1	Chest strap (B) (1,2,3,4,5,8,9,12)	
19	4147 881 5700	1	Tool backpack (B)	





59031T045 SC

(1) FS 360 C-E, (2) FS 360 C-E Z, (3) FS 360 C-EM, (4) FS 360 C-EM Z, (5) FS 410 C-E, (6) FS 410 C-E K, (7) FS 410 C-E KZ, (8) FS 410 C-E L, (9) FS 410 C-EM, (10) FS 410 C-EM K, (11) FS 410 C-EM KZ, (12) FS 410 C-EM L

## Serial number

---

Reference	Qty	Description
1	1	Position of serial number

---